



Data Infrastructure

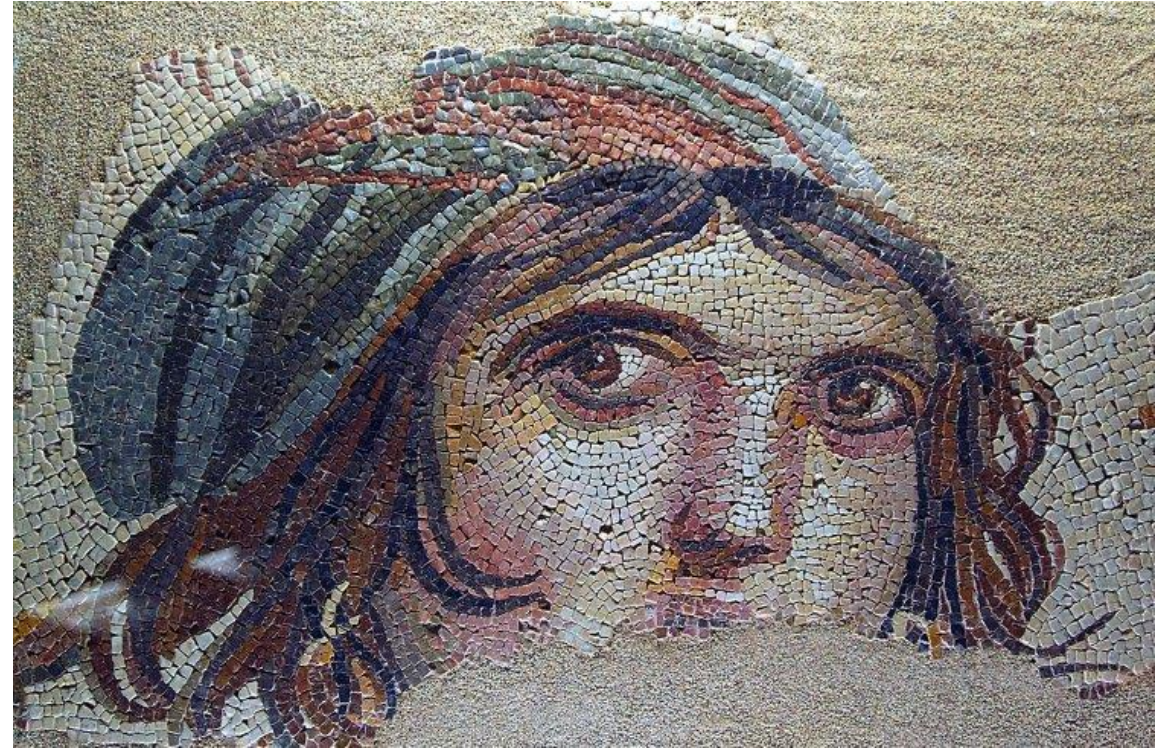
Operational data management for Data Infrastructure

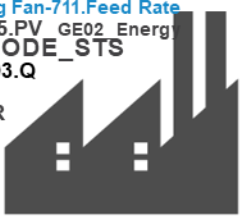
Presented by: PI Presales engineer
Byeongchul Yun

AVEVA

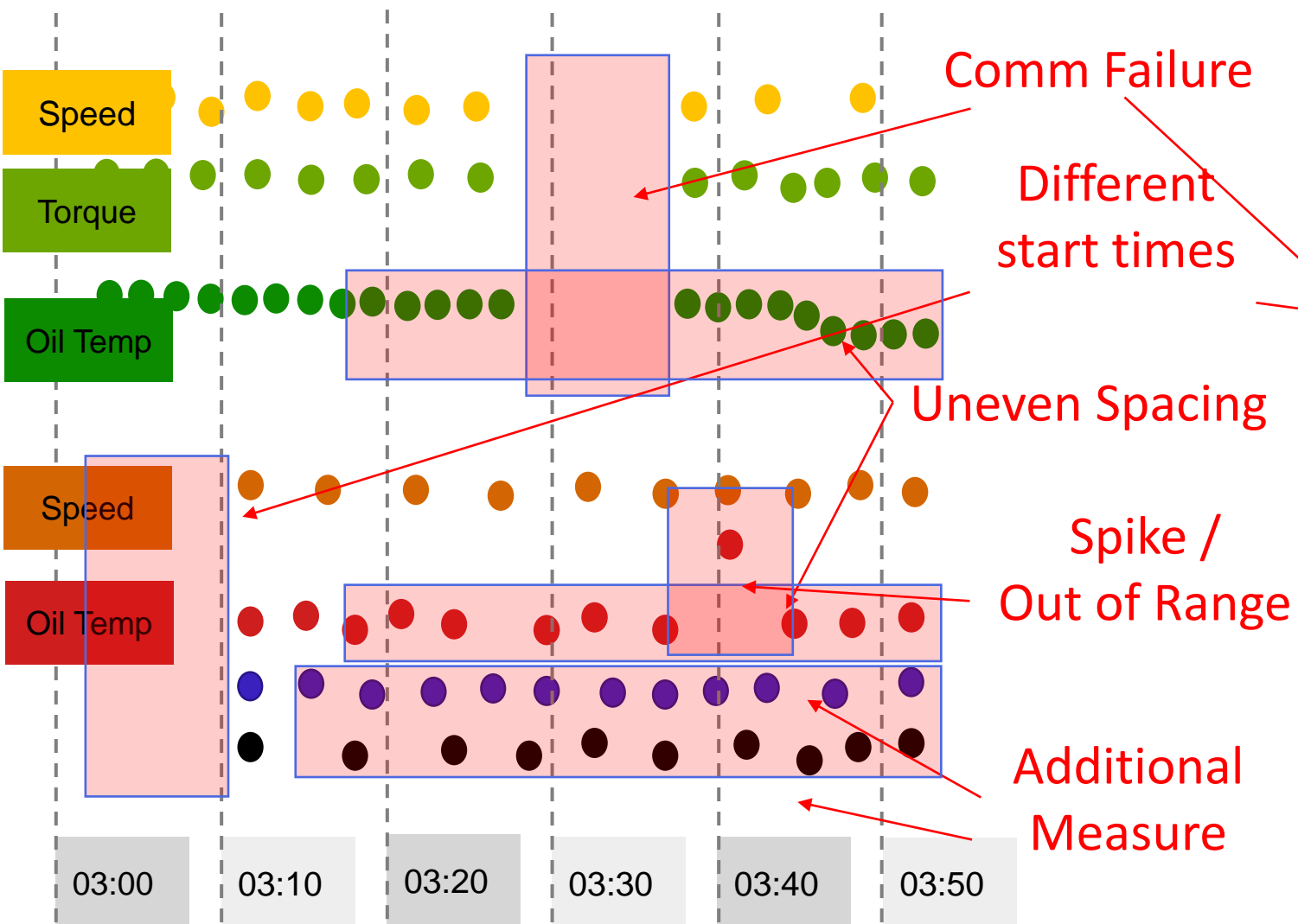
So, what can **we** do?

Structure Makes All the Difference



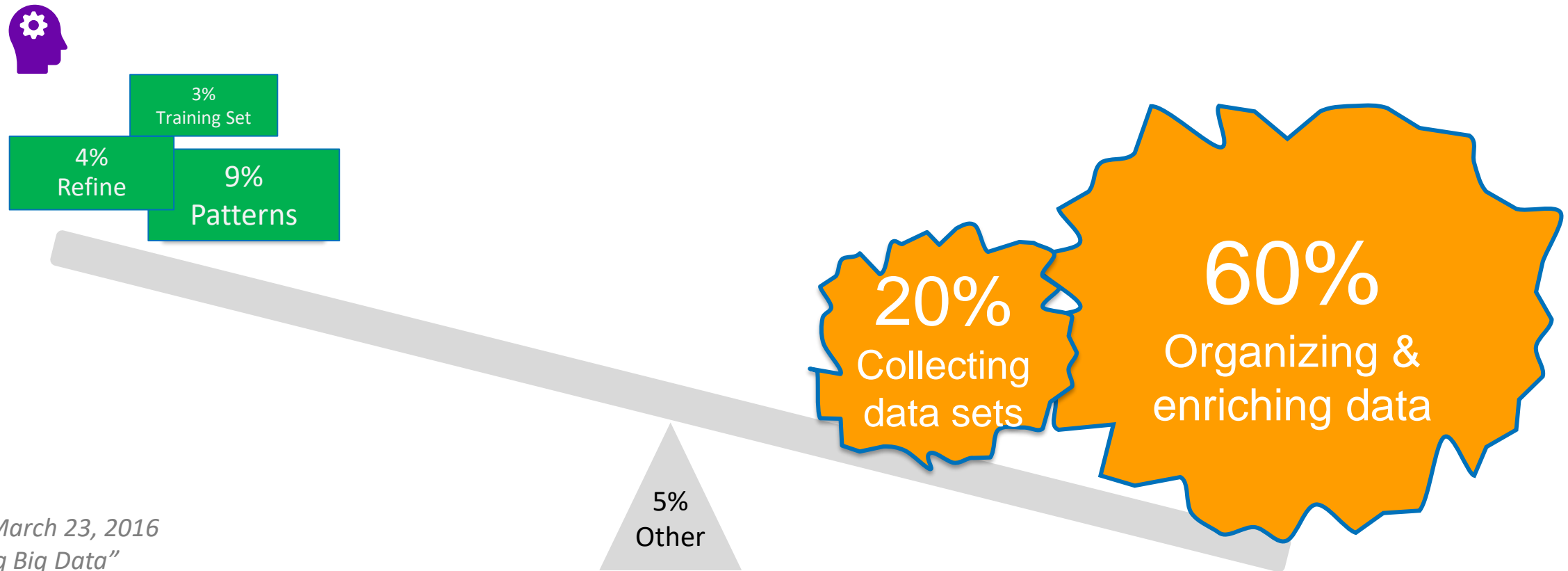


Time to Tables is Hard



	Speed	Torque	Oil Temp	Speed	Oil Temp
03:00	9.8	25	50	X	X
03:10	10	24	50	10.0	60
03:20	10	25	50	10.2	60
03:30	X	X	X	9.8	60
03:40	9.9	25	50	10.0	120
03:50	9.9	25	45	10.1	60

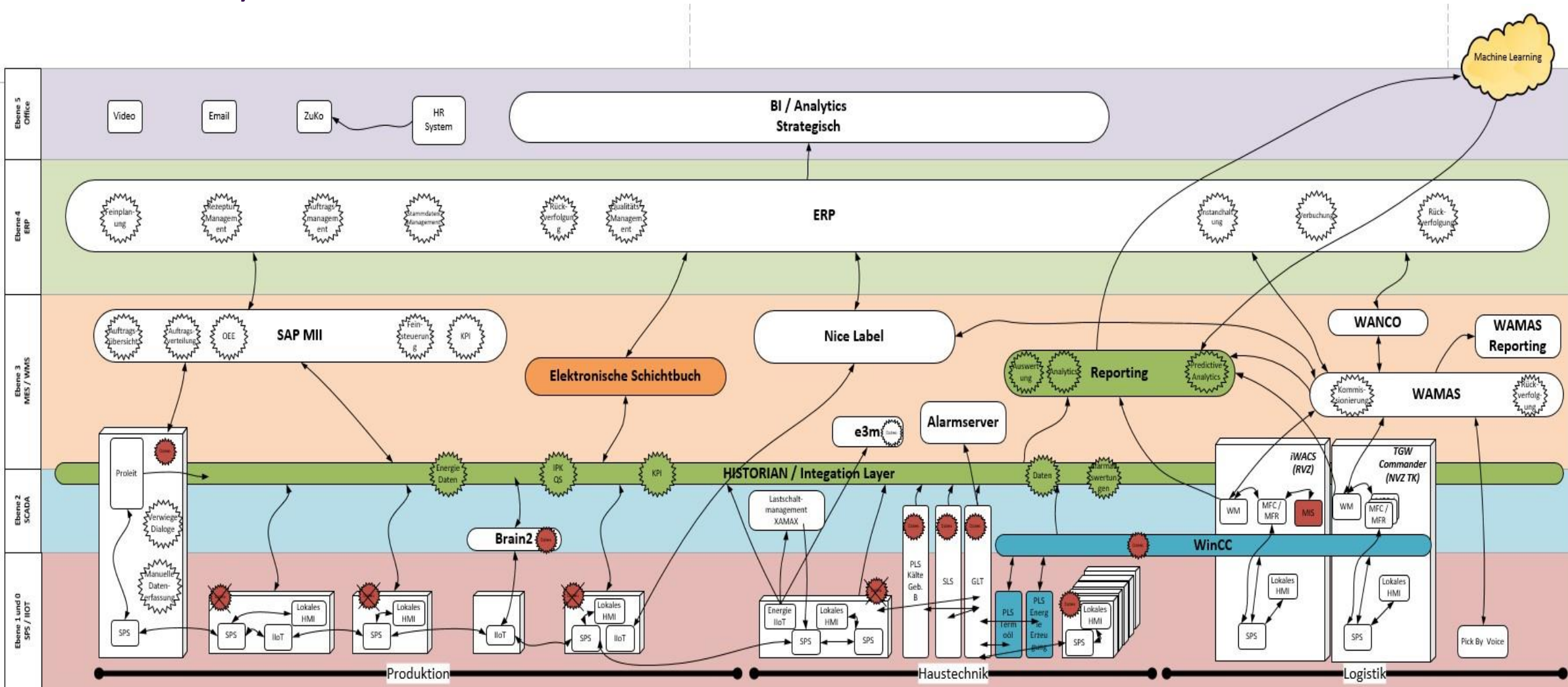
80% of Investment Lost to Data Preparation that could be automated



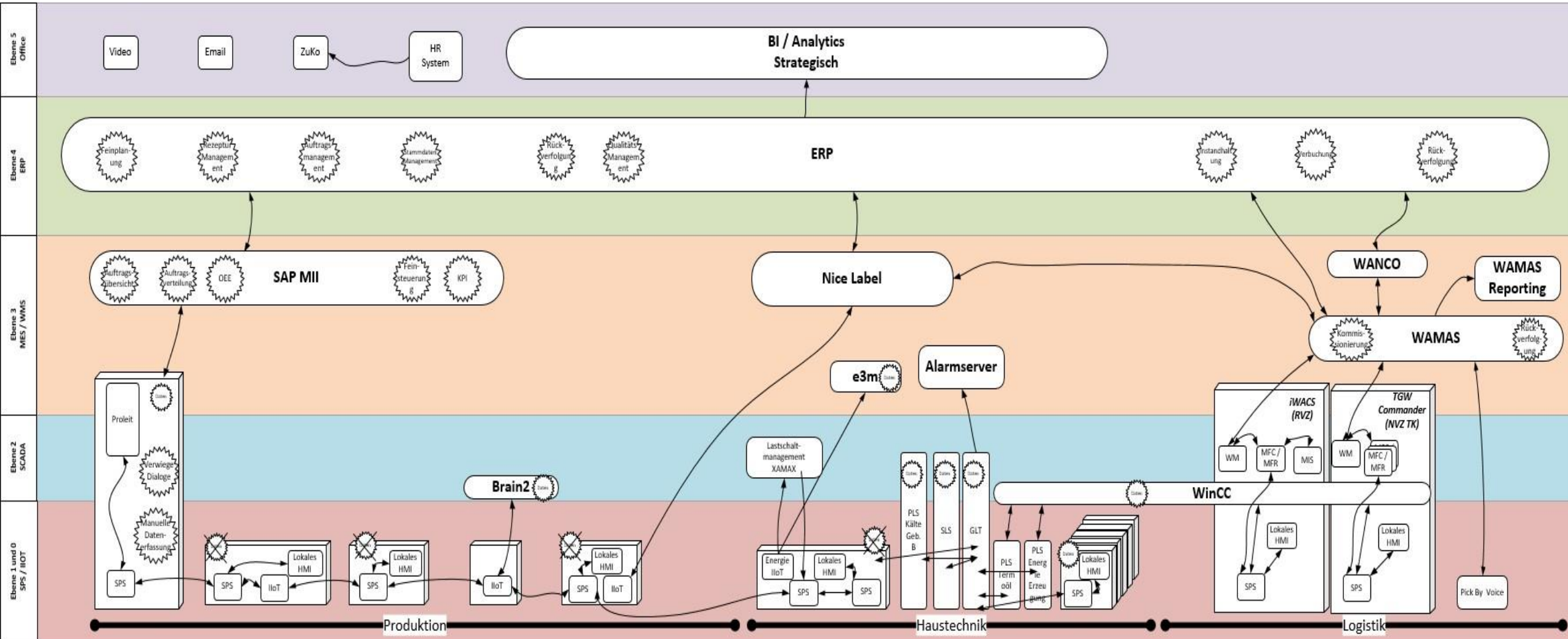
Forbes, March 23, 2016
"Cleaning Big Data"

“It should be easy.....**shouldn't it?**”

where you want to be

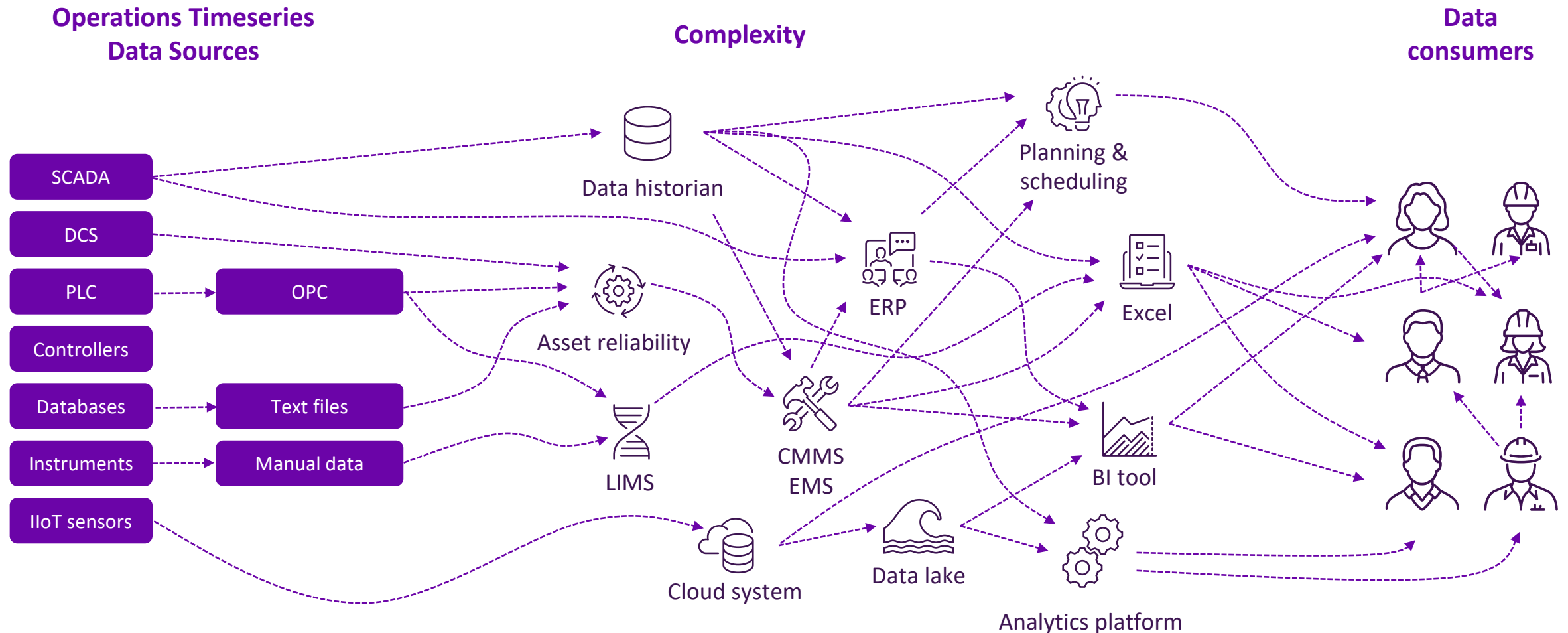


where you are...



“Let us think **one by one**...”

Managing Operations Data is Complex







Collect

PI Connectors, PI Interfaces, PI Adapters



High
performance



Secure
architecture

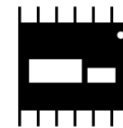


225+ standard
interfaces

Collects **time-series** and **meta-data** from any source



DCS



PLC



SCADA



IoT Sensors



Databases

Collect

Store
and
enhance

Deliver

Collect

PI Manual Logger



Safety
equipment
inspections



Visual
inspections

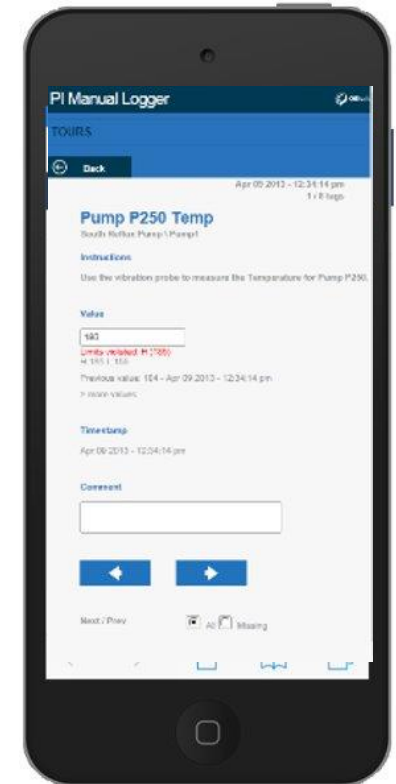


Lab
samples



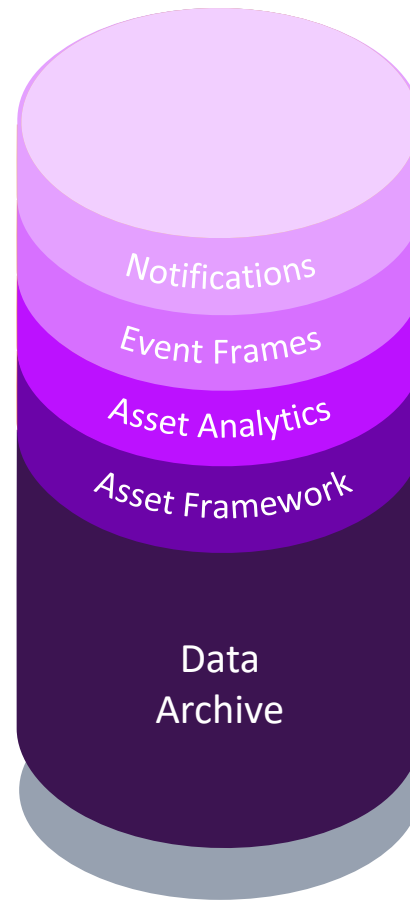
Older
equipment

- **PI Manual Logger PC**
 - Configure tours
 - Enter, review, edit, or approve the data
- **PI Manual Logger Web**
 - Collect data from equipment with a mobile device
 - Barcode to identify tags and/or enter data (Inateck BCST-10, Motorola CS3070)



Collect **Store and enhance** Deliver

Store and Enhance



PI Server

Low Efficiency Notification

Low Efficiency Event

$f(x)$ Pump Efficiency

Pump Station

Pump01

Bearing Temperature

Suction Pressure

Manufacturer

Etc...

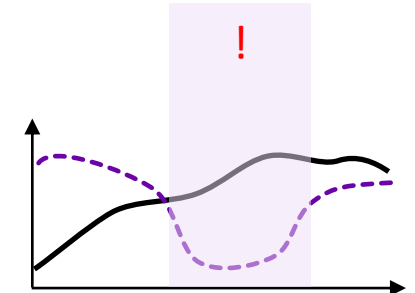
Pump02

Pump03

Pump04

Pump05

Pump06



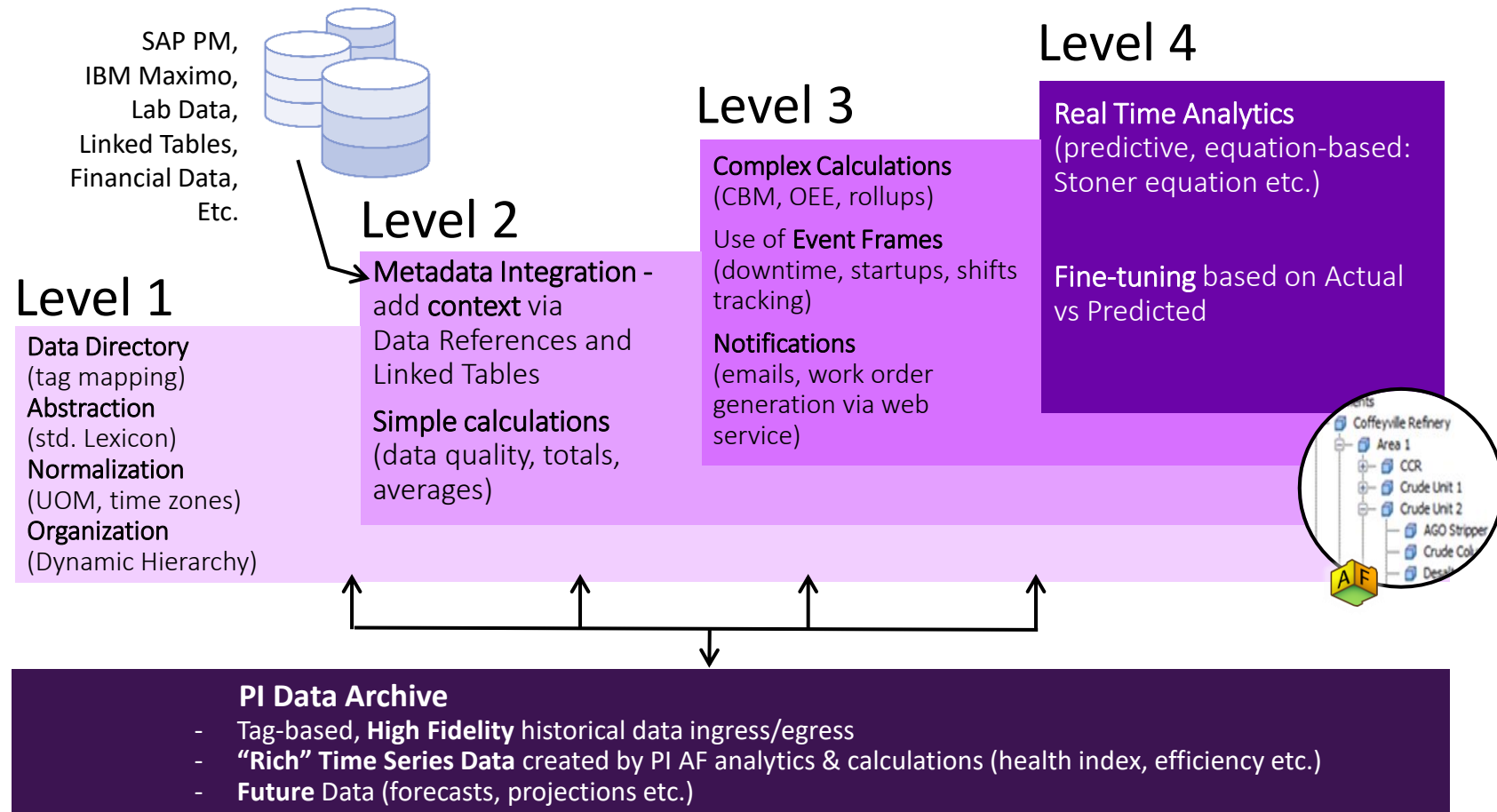
P01.BT.PV

P01.SP.PV

External data

PI Asset Framework Maturity Levels

“Start Simple but Simply Start” Kevin Milliman, DCP Midstream



PI Vision

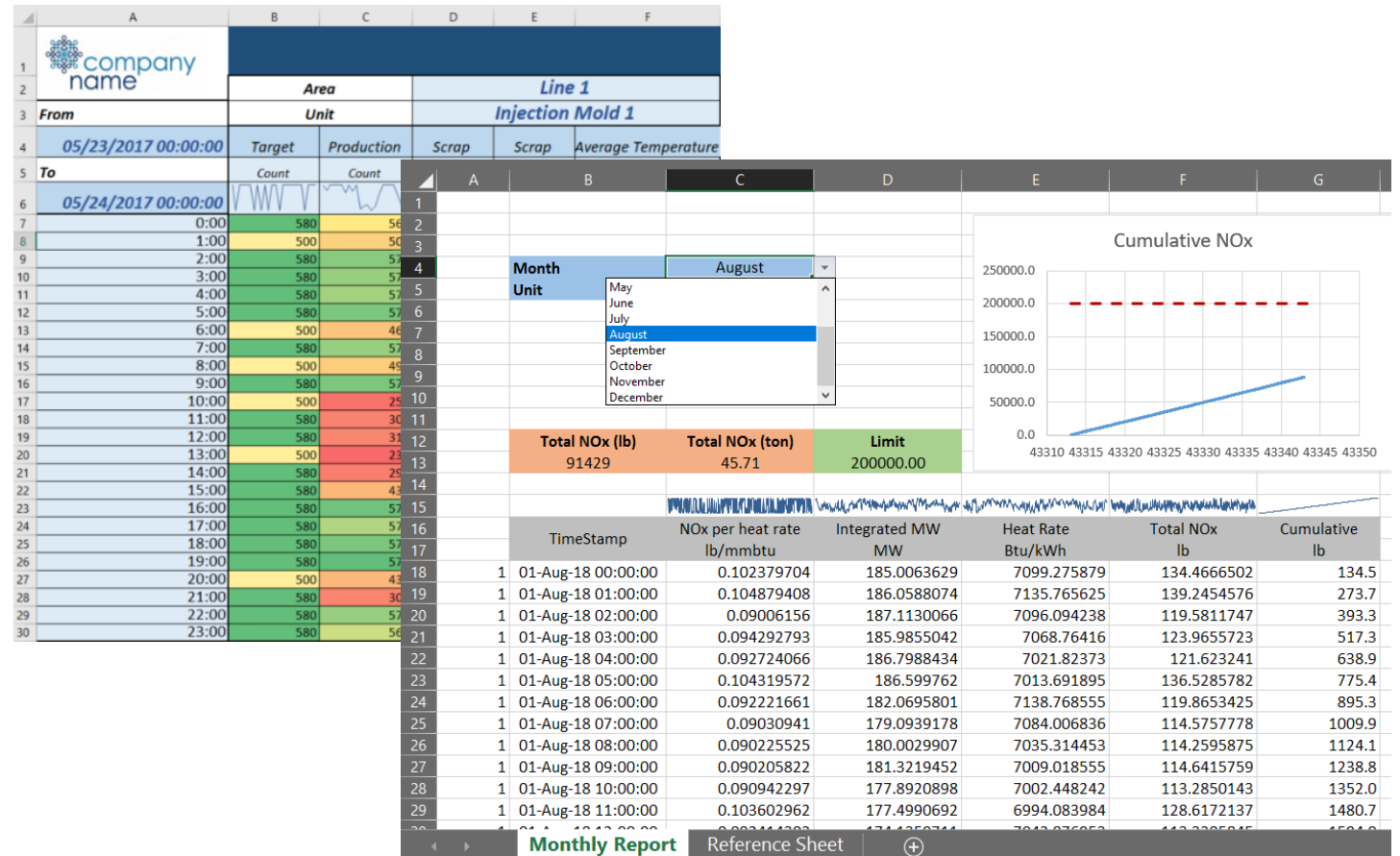
An easy to use, self-service, scalable visualization solution

Collect

Store and enhance

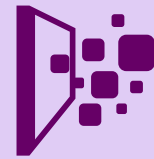
Deliver





PI Integrators

Prepare, clean and deliver PI System data to external systems



Business Analytics

- Connect to any BI platform
- Develop machine learning models
- Available for **Streaming** and **Batch**



Microsoft SQL Server



Google Cloud Platform

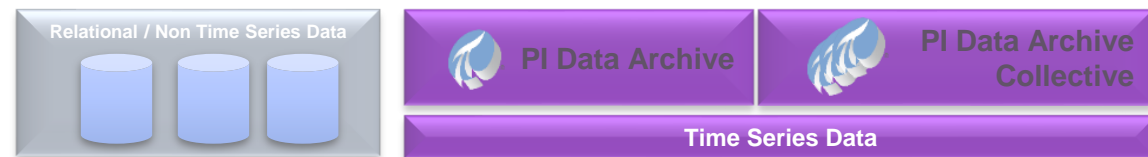
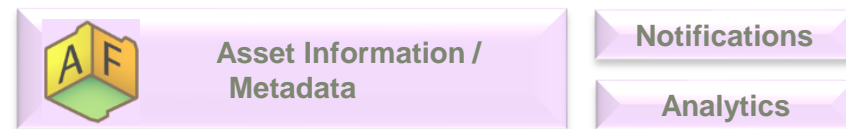
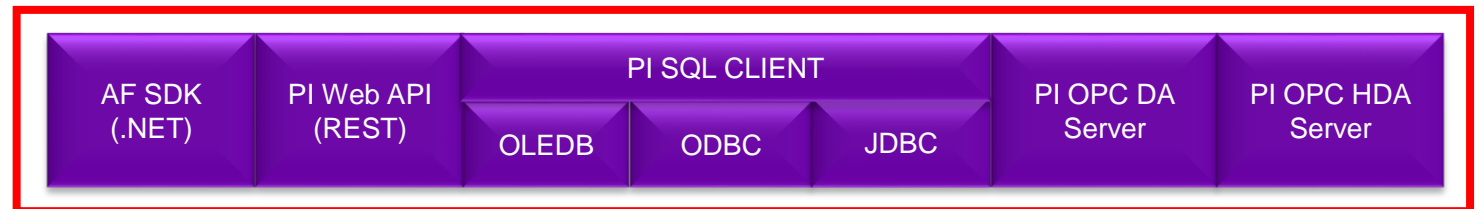


ArcGIS

See your real-time data on a map

PI System Access

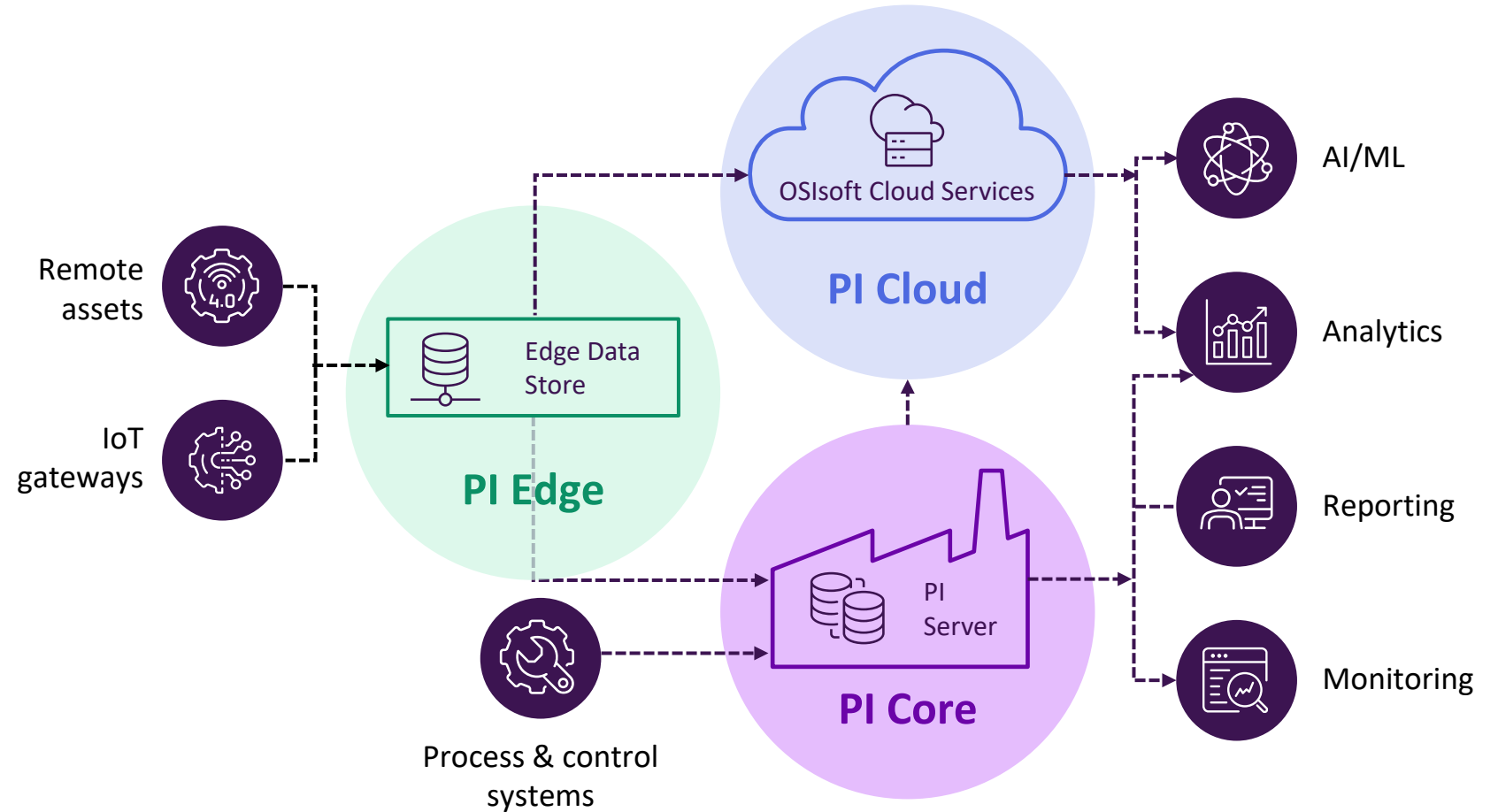
A **developer technologies suite** to build custom applications or integrate PI with other systems



PI System

PI System

enables edge-to-cloud visibility
and intelligence



Secure access to **structured** and **cleansed** operational data
from its source to whomever and wherever it's needed

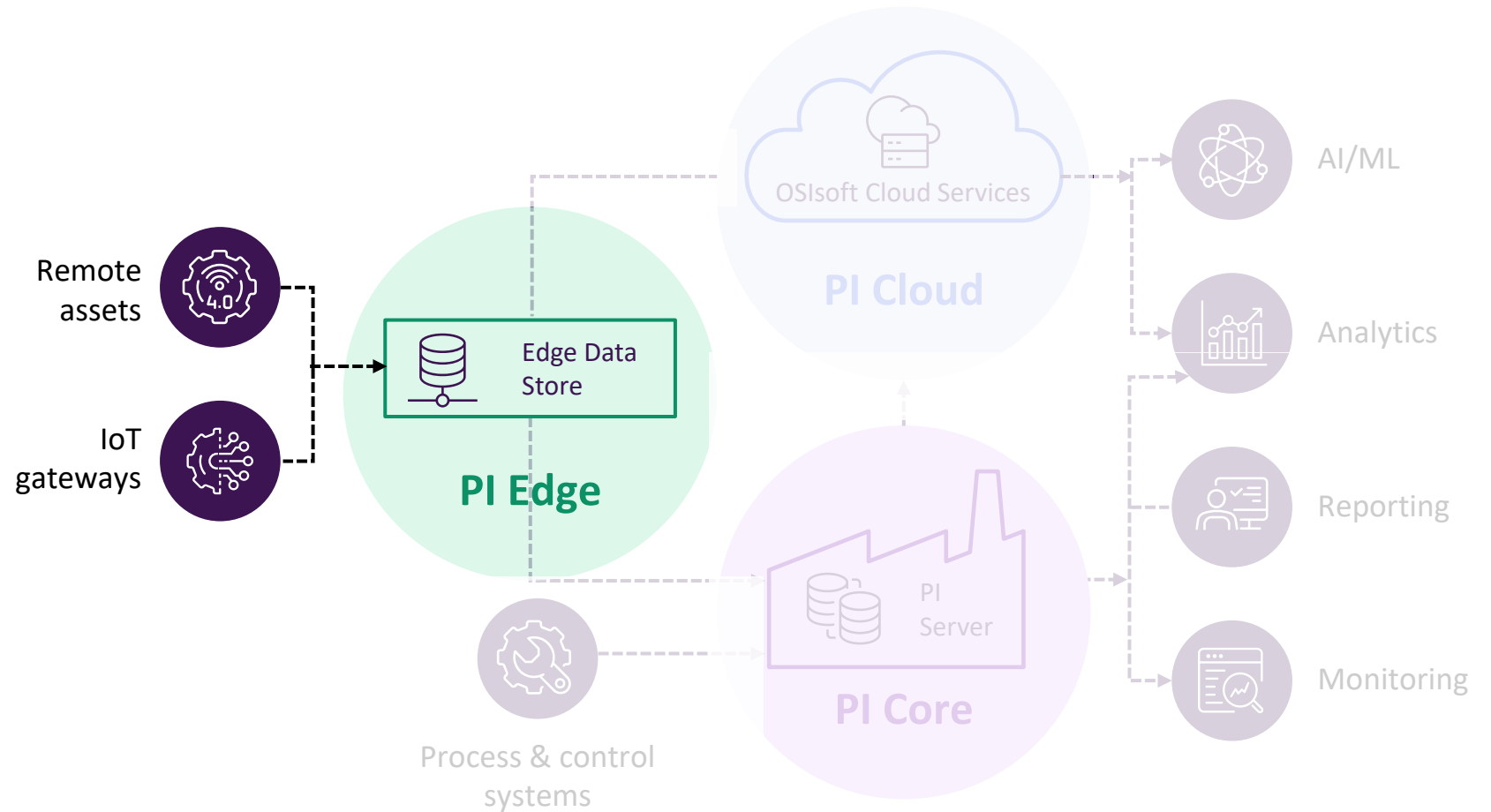
“Beyond On-premise, edge-to-cloud...”

PI Edge

Support edge IIoT patterns

Lightweight software supported on rugged devices

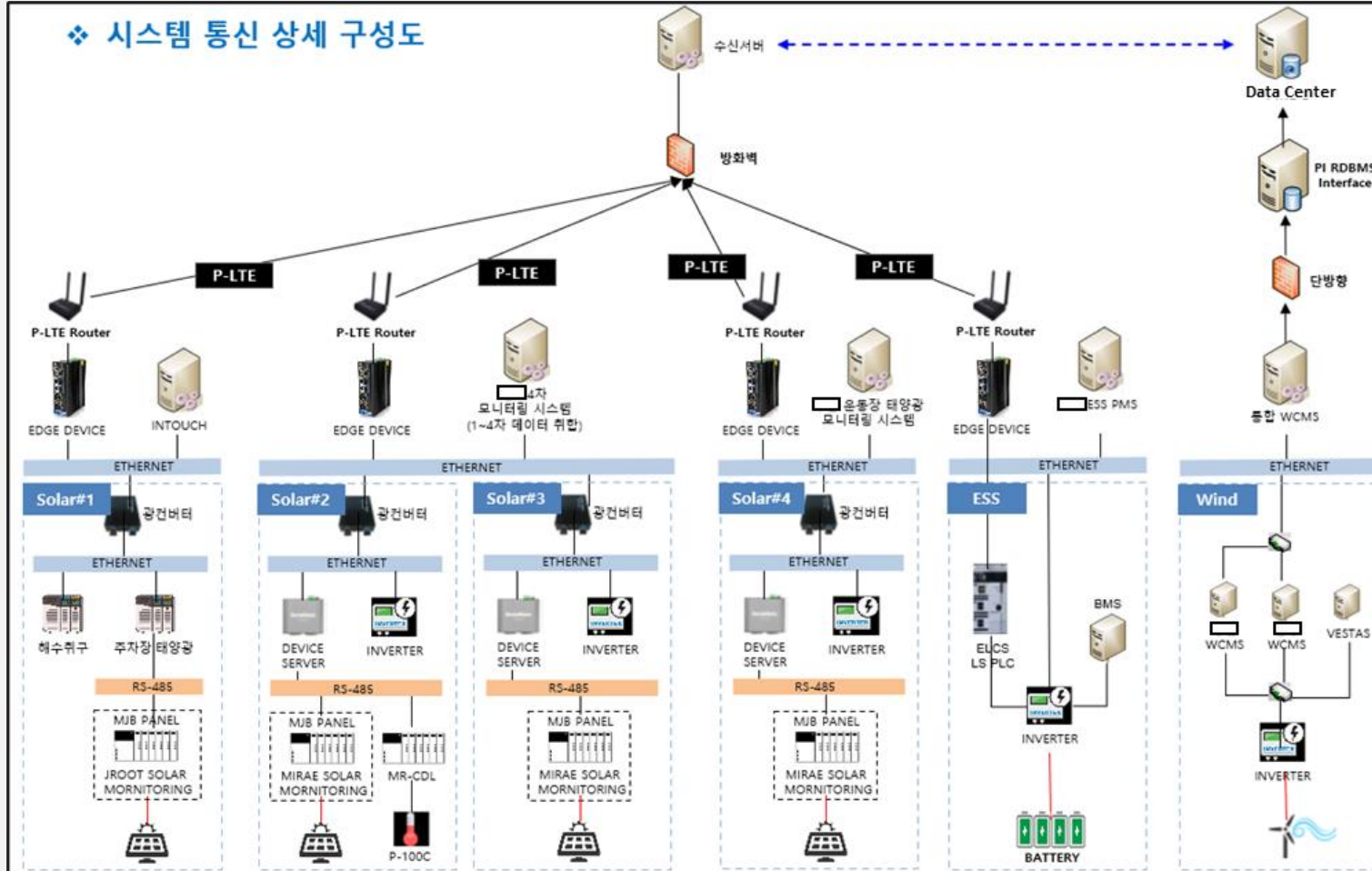
- Configuration options to optimize bandwidth
- Empower users in the field, beyond the four walls
- Enable high speed edge analytics



Secure access to structured and cleansed operational data
from its source to whomever and wherever it's needed

PI Edge Reference

❖ 시스템 통신 상세 구성도

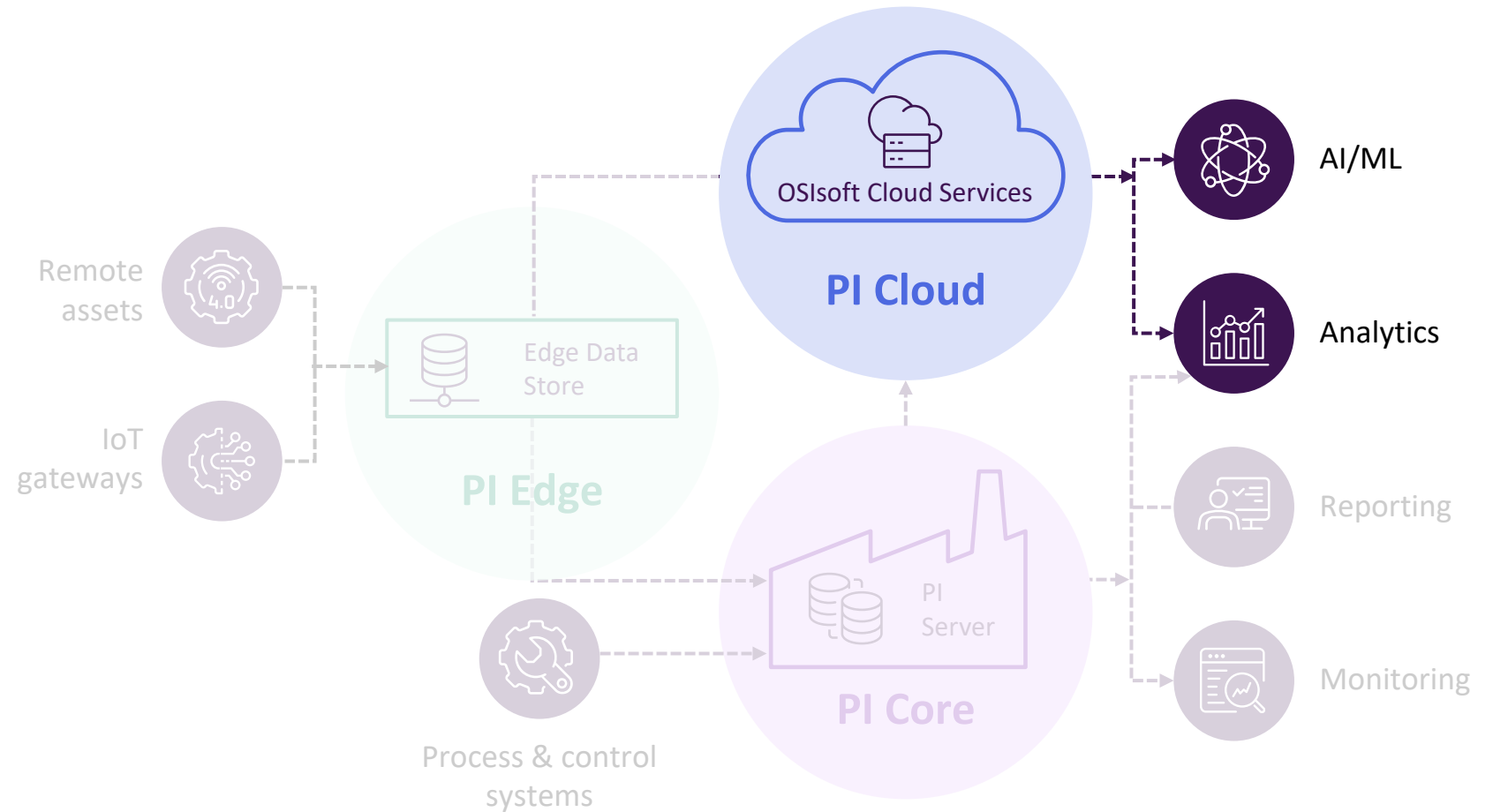


PI Cloud

Analytics and data sharing at scale

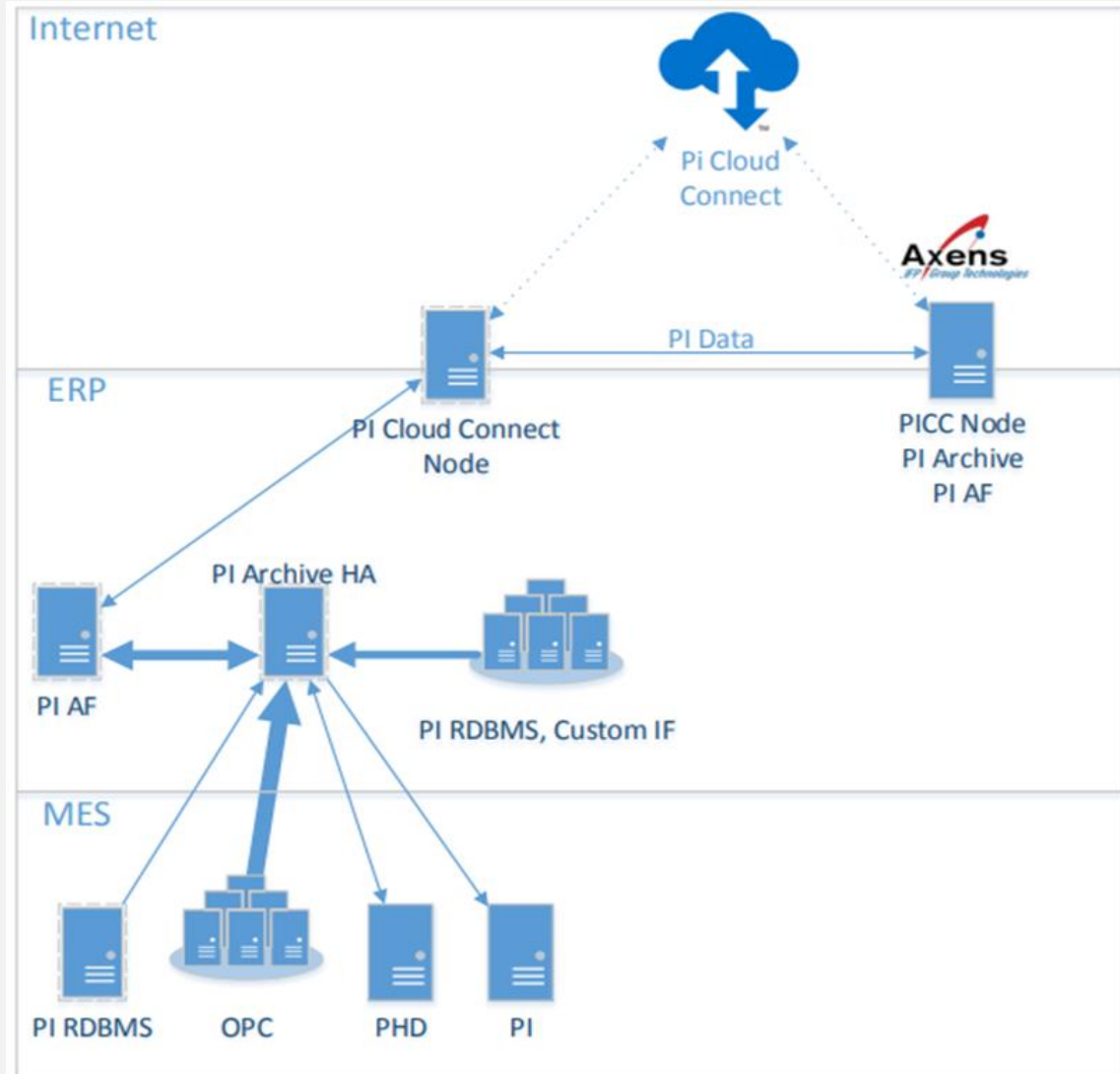
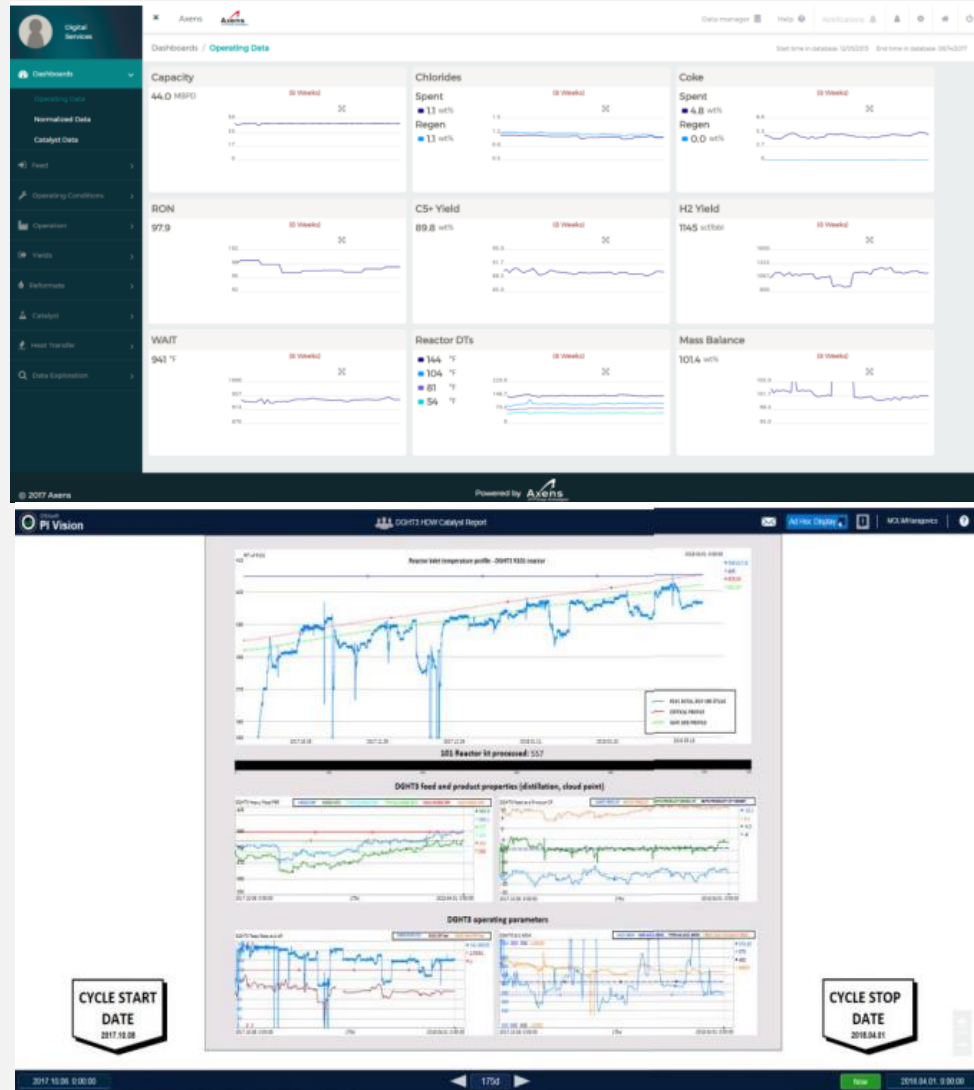
Cloud-native Managed Service built for elasticity and resiliency

- Supports scalable cloud workloads for advanced analytics
- Data sharing creates new value networks

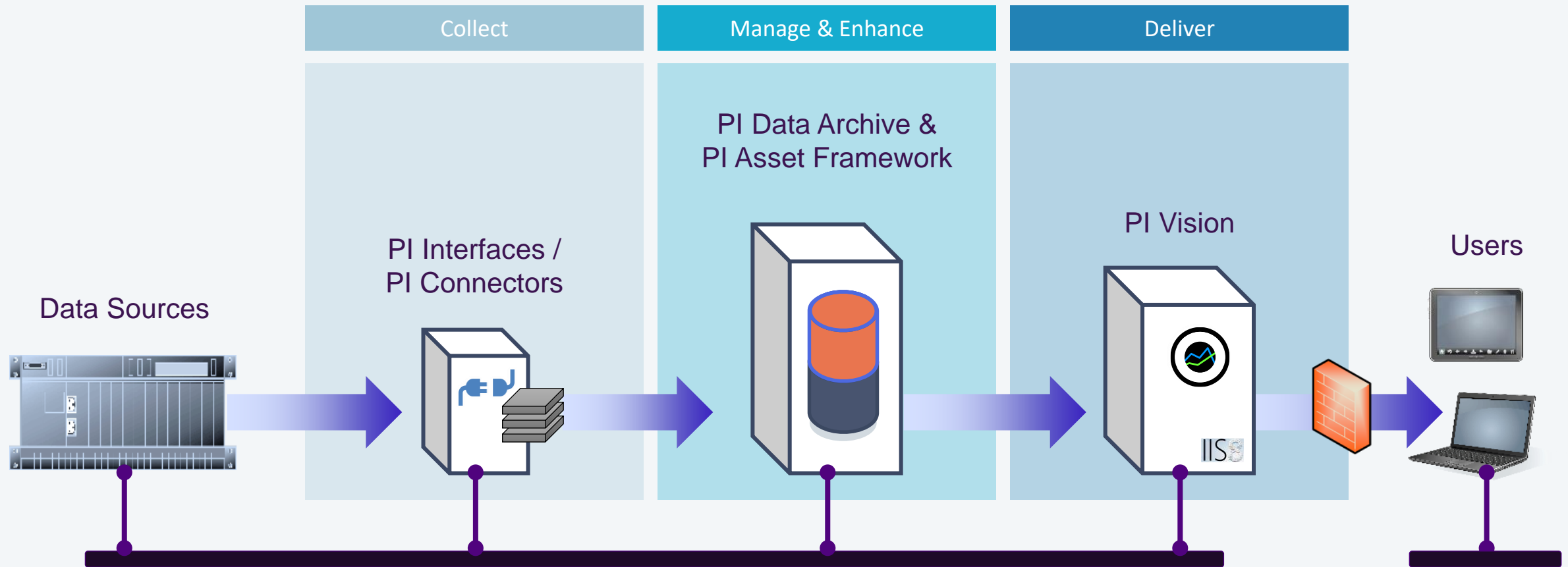


Secure access to structured and cleansed operational data
from its source to whomever and wherever it's needed

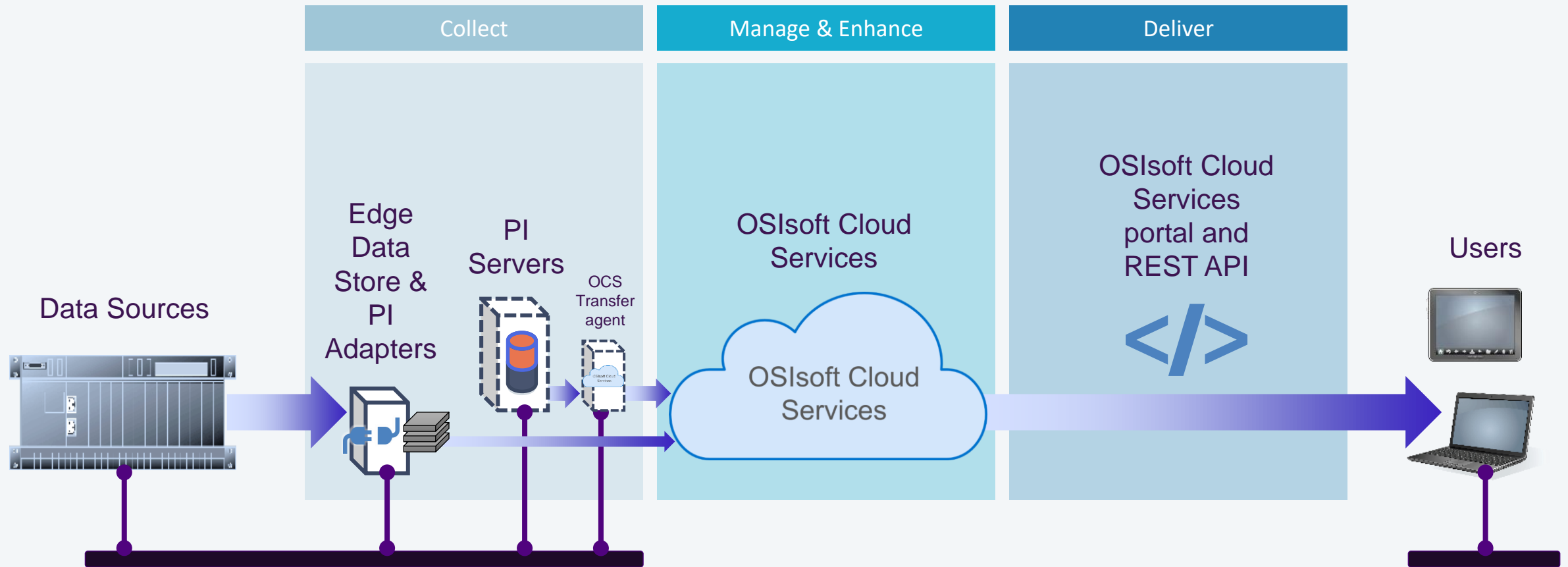
PI Cloud Reference



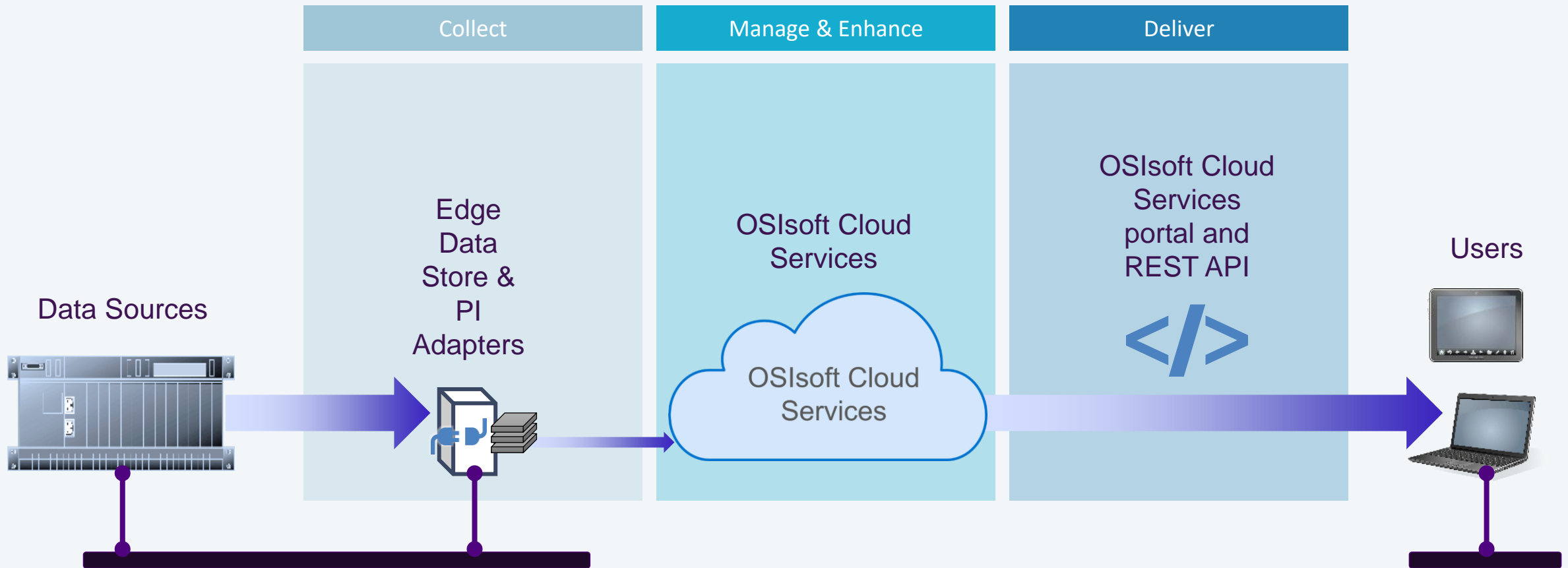
The PI Server provides a key component of the **hybrid** cloud



A complete hybrid on-prem and cloud architecture

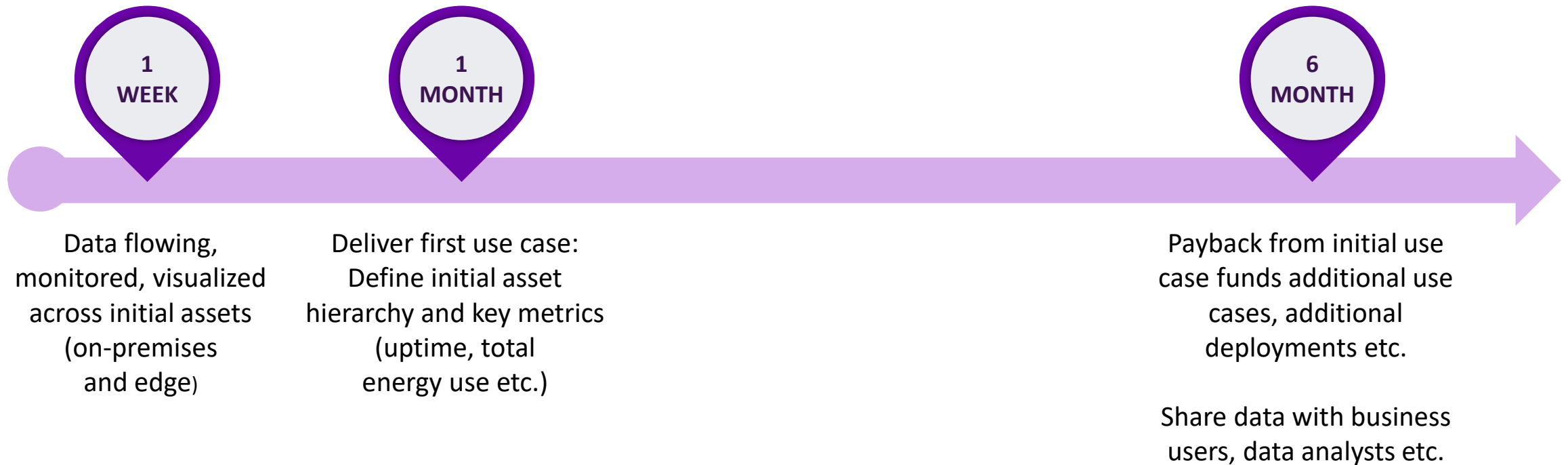


PI Edge enriches the hybrid cloud with direct edge-to-cloud

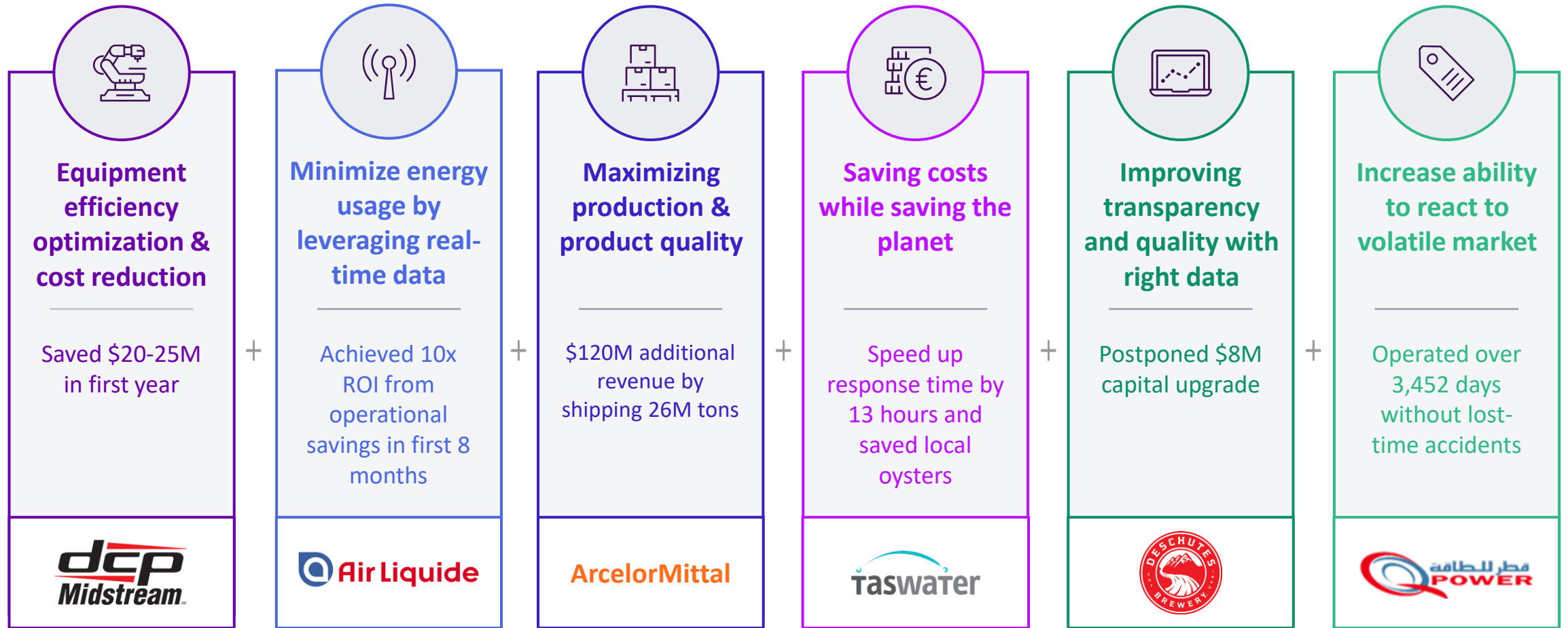


“Better data. Better business outcomes”

Rapid Time to Value



Our Proven Success - Industry Agnostic



PI Server: trusted by essential industries for over 40 years



Oil & Gas

85%

of the top oil and gas
companies



Power & Utilities

1000+

utilities worldwide



Mining & Metals

9

of the top 10 Mining
companies



Pharma & Life Sciences

24

of the top 25
Pharmaceutical companies



Chemicals

9

of the top 10 Chemical
companies




Manufacturing


6

of the World Economic Forum's
Factories of the Future

This presentation may include predictions, estimates, intentions, beliefs and other statements that are or may be construed as being forward-looking. While these forward-looking statements represent our current judgment on what the future holds, they are subject to risks and uncertainties that could result in actual outcomes differing materially from those projected in these statements. No statement contained herein constitutes a commitment by AVEVA to perform any particular action or to deliver any particular product or product features. Readers are cautioned not to place undue reliance on these forward-looking statements, which reflect our opinions only as of the date of this presentation.

The Company shall not be obliged to disclose any revision to these forward-looking statements to reflect events or circumstances occurring after the date on which they are made or to reflect the occurrence of future events.

 [linkedin.com/company/aveva](https://www.linkedin.com/company/aveva)

 [@avevagroup](https://twitter.com/avevagroup)

ABOUT AVEVA

AVEVA is a global leader in industrial software, driving digital transformation and sustainability. By connecting the power of information and artificial intelligence with human insight, AVEVA enables teams to use their data to unlock new value. We call this Performance Intelligence. AVEVA's comprehensive portfolio enables more than 20,000 industrial enterprises to engineer smarter, operate better and drive sustainable efficiency. AVEVA supports customers through a trusted ecosystem that includes 5,500 partners and 5,700 certified developers around the world. The company is headquartered in Cambridge, UK, with over 6,500 employees and 90 offices in over 40 countries.

Learn more at www.aveva.com