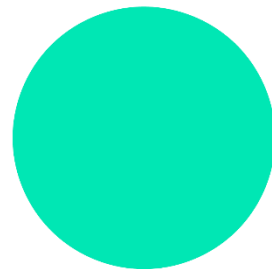


# Mobility in a future smart city

The effect on people, commerce, infrastructure

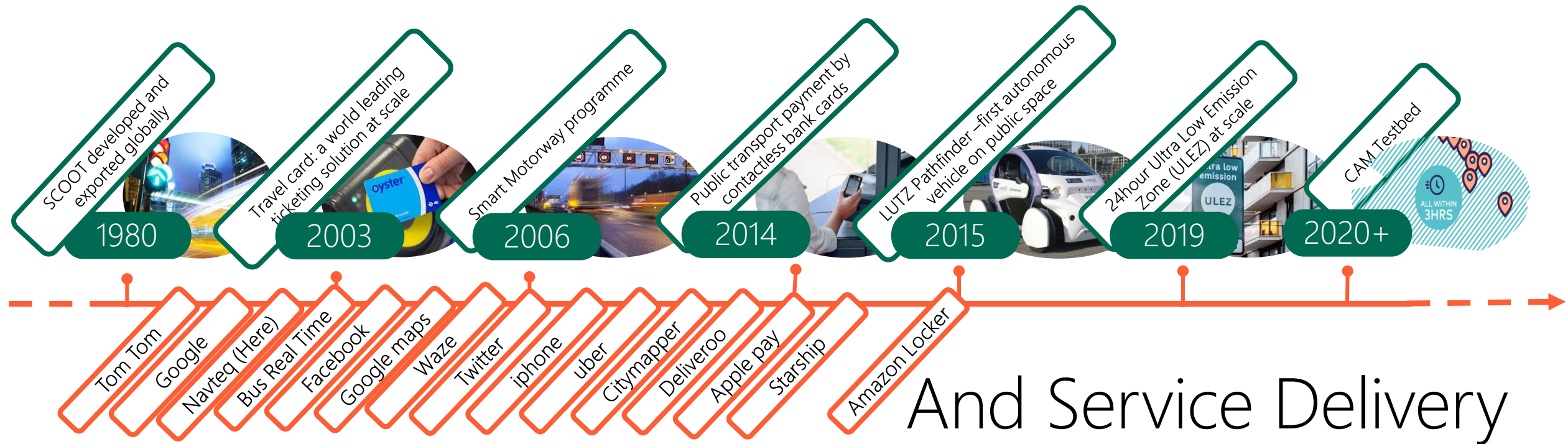
- Mobility
- User Perspective
- Last Mile
- Goods
- Electric
- Assets
- Smart?



# Mobility



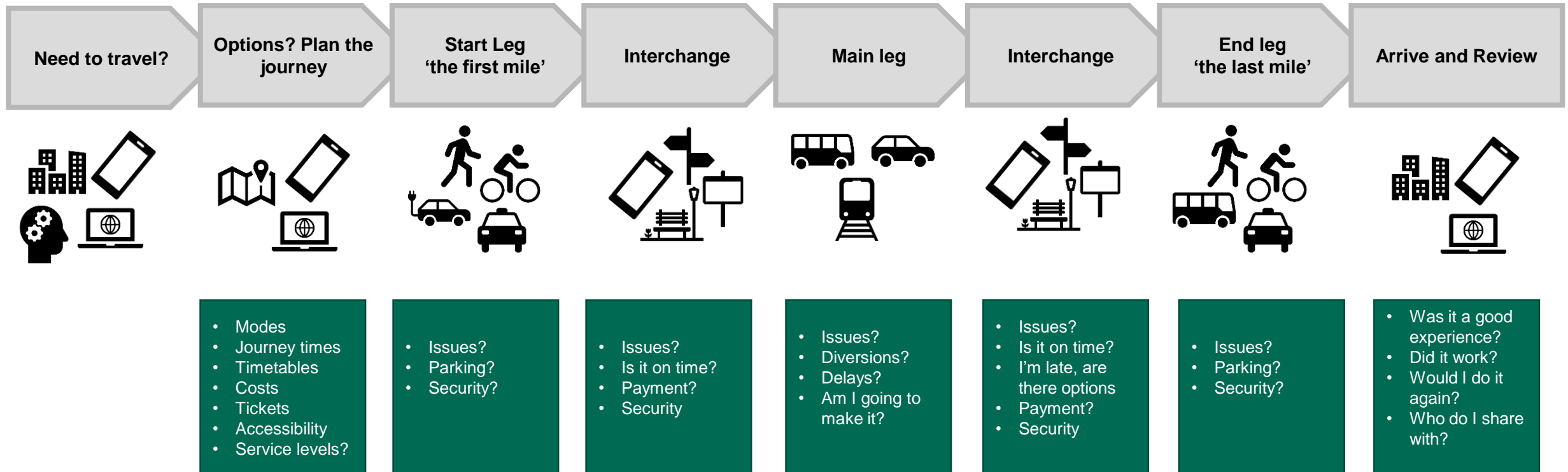
# Innovation in mobility



# Smart City?



# User perspective



# Improving the public transport



# Other last mile options



Recent Demonstrations in Milton Keynes



Micromobility



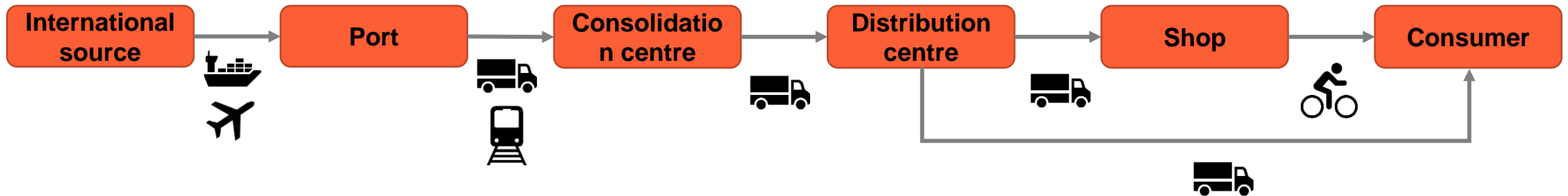
# A freight perspective

Additional consideration for import

Additional consideration for manufacturing

Additional consideration for export

Import non-food end product to consumer | A journey of an imported product such as toys, furniture, and electronics to a consumer.



- Road
- Rail
- Maritime
- Air
- Active

# What is the status quo?

- In the UK, 60% of journeys between 1 and 2 miles are completed by motor vehicles.
- The number of Light Goods Vehicle (LGV) miles has grown by 70% over the last 20 years and vans are the fastest growing subcategory of vehicle.

Department for Transport



Congestion

Poor Air Quality

Carbon emissions

# What are the opportunities and challenges?

## Cost

Last-mile delivery costs on average 41% of total delivery costs

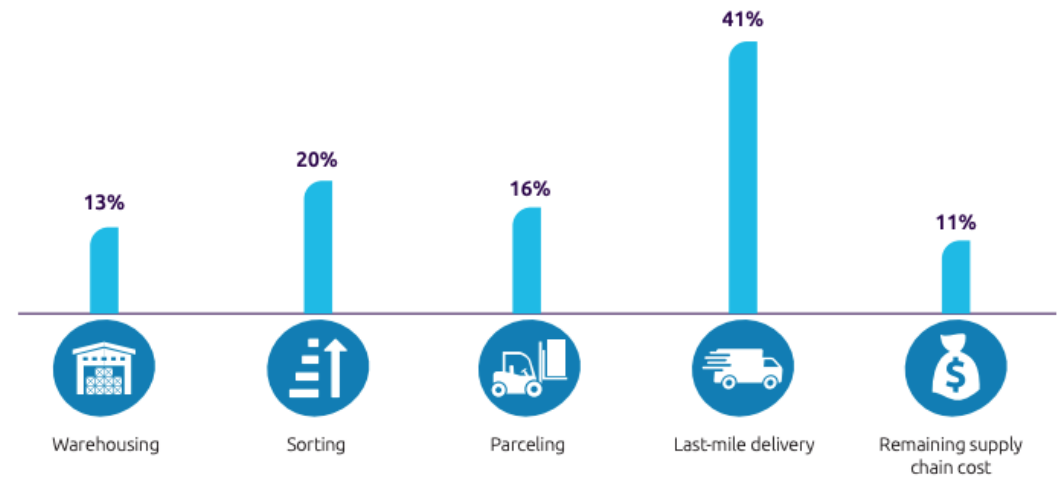
## Demand

Consumers expect fast and free delivery and returns

## Consolidation

Consolidation of deliveries of goods and people in low population density areas

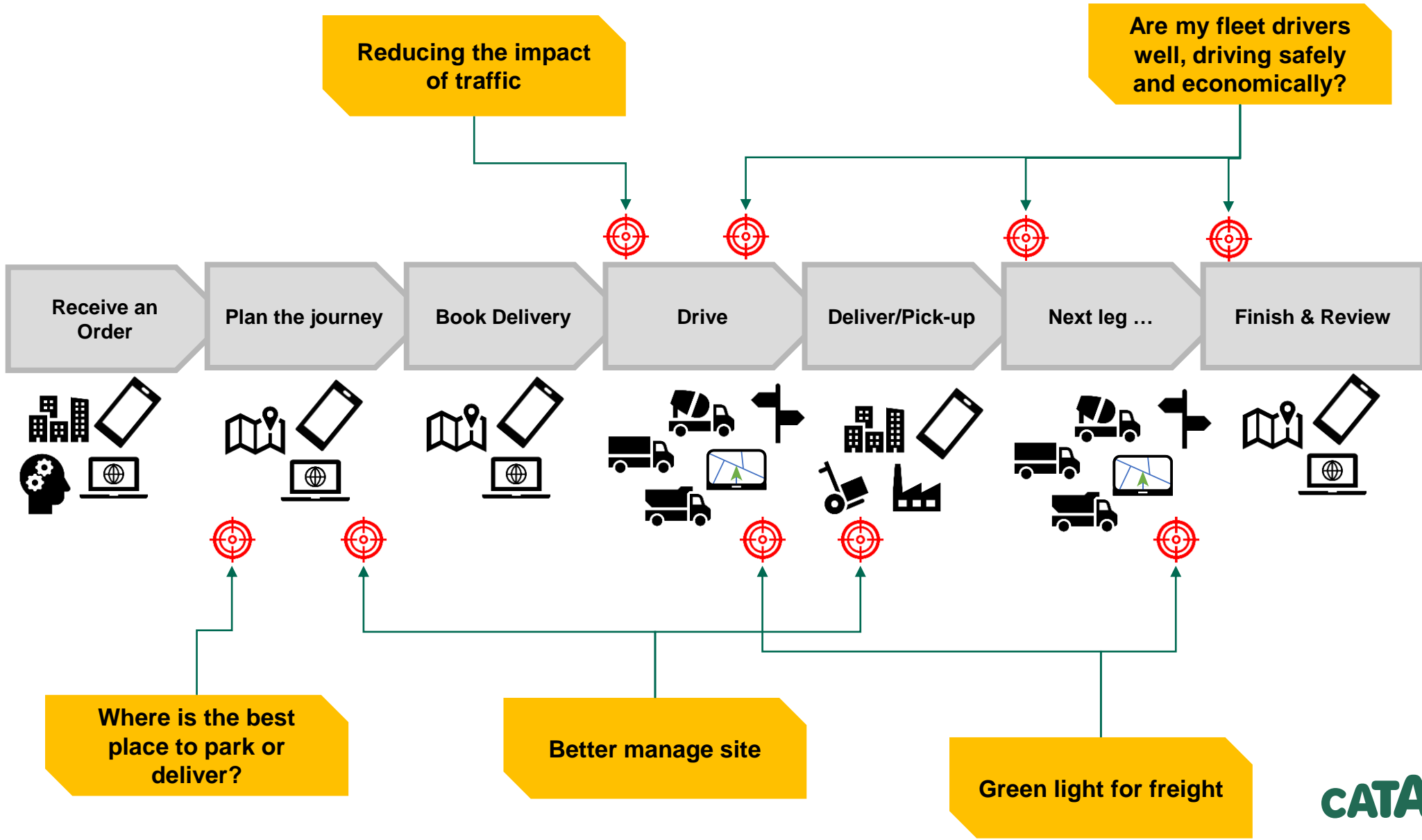
Figure 13. Last-mile delivery is the biggest cost driver in the supply chain



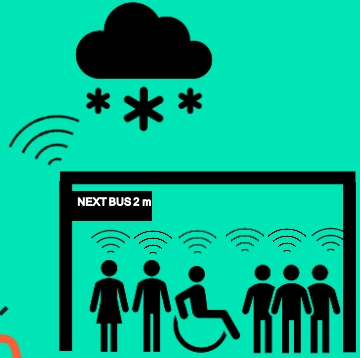
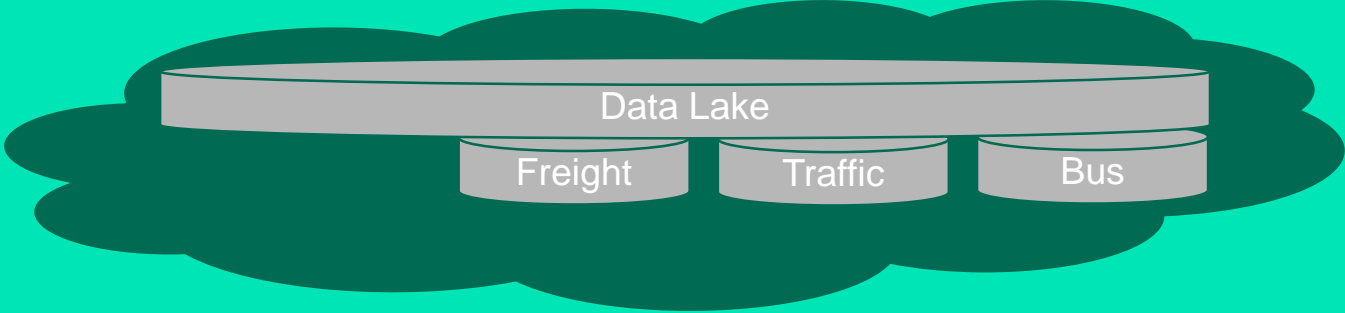
Source: Capgemini Research Institute, Last-mile delivery executive survey, October–November 2018, N=500 executives.



# Goods Mobility



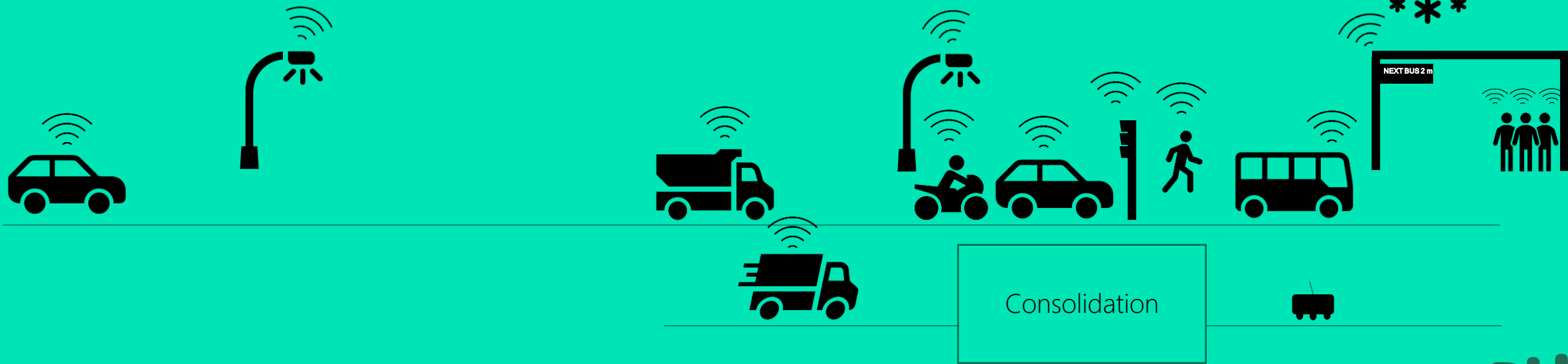
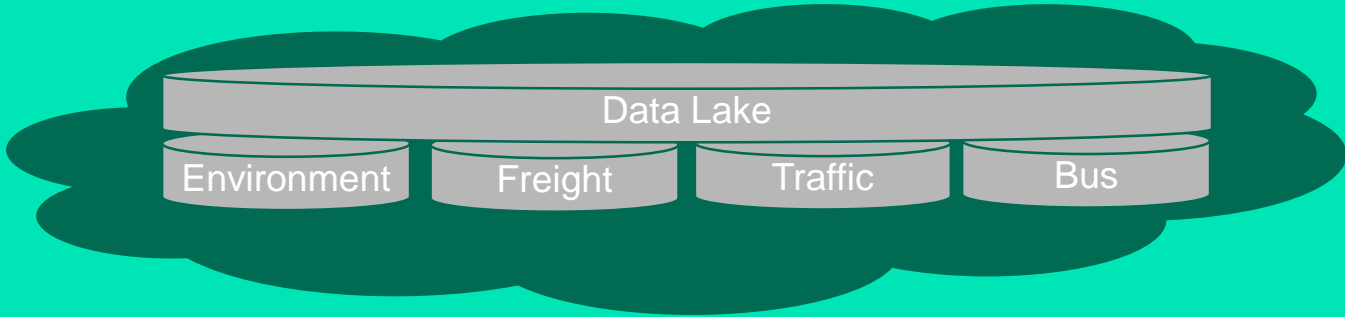
# Improving the operation



Consolidation



# Improving the operation

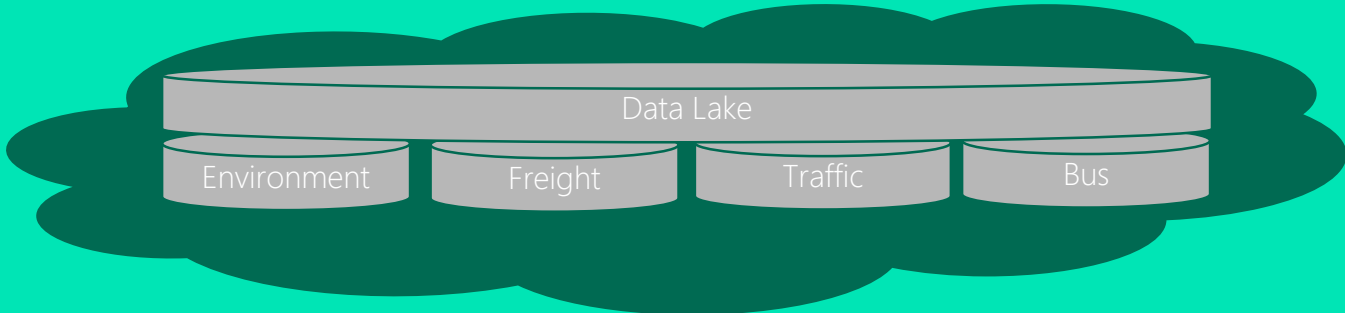




# Going electric

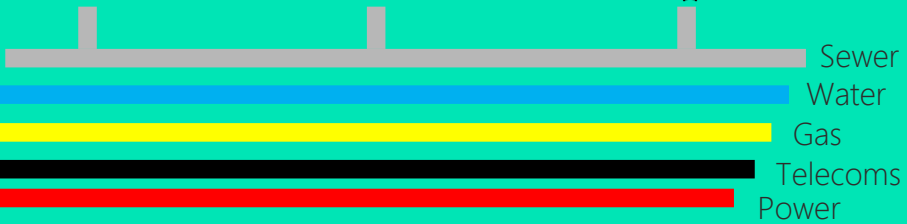
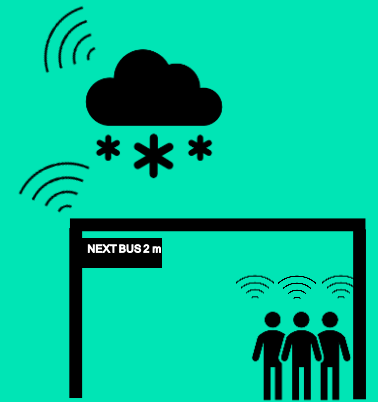
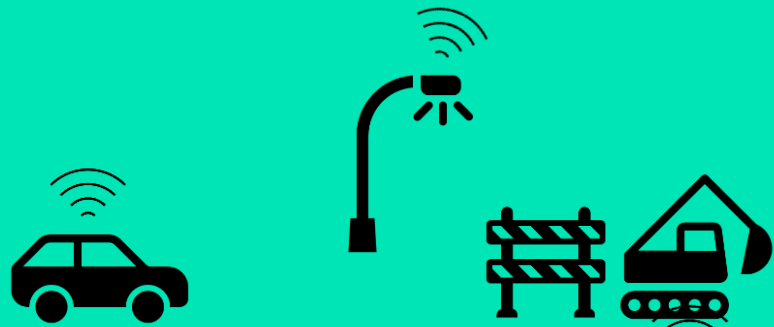
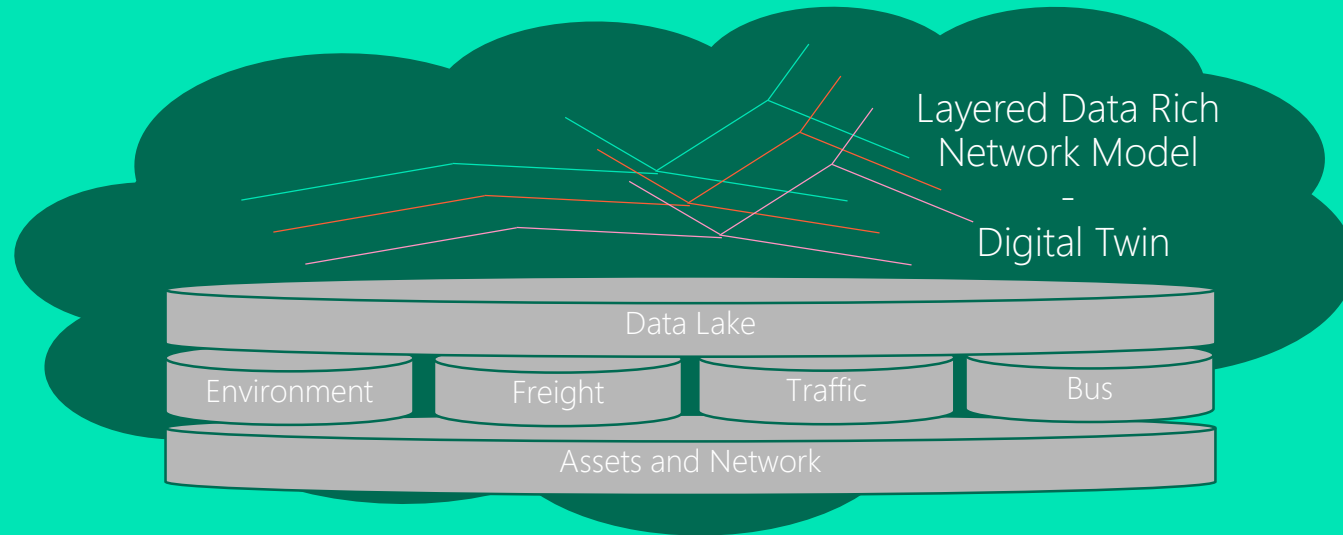


# Managing the assets





# Smart City?



Connected  
User Centric  
Smart

**CATAPULT**  
Connected Places

