

# Supporting Innovation at Leeds Teaching Hospitals NHS Trust



# Leeds Teaching Hospitals



2,000

beds



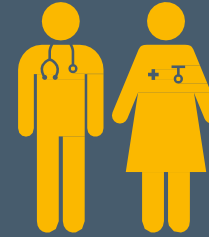
10,000

babies born



130,000

inpatients



almost

17,000

staff



1,150,000

outpatients



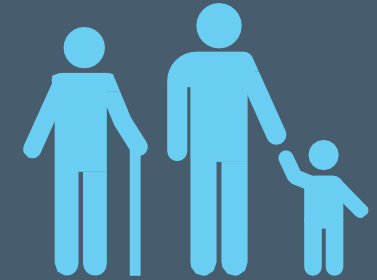
106,000

day case patients



205,000

patients attending A&E

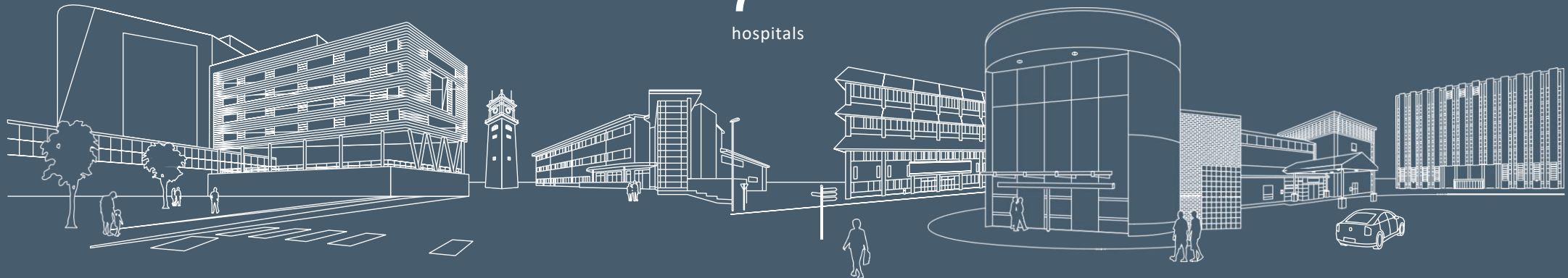


1.5 million

patients every year

7

hospitals



# “Hospitals of the Future”

- National plan to build 40 new hospitals built across UK by 2030.
- Leeds are the first hospital of 6 in wave 1 of the plan .
- Share of £2.7b initial government funding.
- We are building two state-of-the-art hospitals at Leeds General Infirmary to open in 2026 including a Children's hospital.
- Totalling Circa 94,000m2 in size.
- Requirement to be digital, sustainable and innovative.



Make Leeds Teaching Hospital and their Strategic Partners the global leaders in the successful translation, adoption, scaling and spread of healthtech innovation. Creating the most compelling destination for healthcare talent, academic and healthtech industry partnerships

**“Enabling Innovation, Ideation, Translation and Adoption from an NHS setting for patient and staff benefit”.**

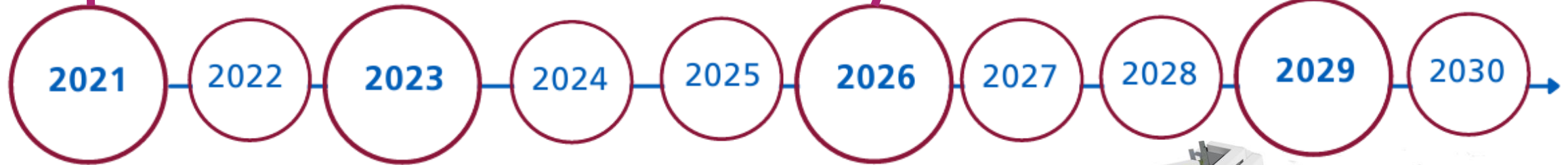


# Creating an Innovation Village



Activity will grow in the Innovation Pop Up with opportunities to expand into around 600sqm over the next 12 months

A developer will be appointed from 2023 onwards with the full masterplan being realised after completion of the new hospitals in 2026



Redevelopment of the OMS will proceed from 2023 onwards providing the potential to develop a 7,000sqm centre for health innovation and education



# Developing an “Innovation Community”

- A network of staff who are innovation leaders, early adopters, inventors and clinical entrepreneurs
- An network of businesses, academics and others who bring technologies and skills that can support the delivery of innovation at scale to patients
- Bringing together groups from across these networks to address defined challenges

# Innovation Pop-up “membership”

	LTH staff member	Virtual member	Clinical innovators	Hot desk member	Corporate member	Resident
Digital Presence	•	•	•	•	•	•
Innovation Community Member	•	•	•	•	•	•
Innovation Support	•	•	•	•	•	•
Hot Desk		£neg	•	10 days	20 days	•
Expo Room		£neg	•	£neg	3 days	£neg
Permanent Space						•
Annual Fee	FREE	£75-£250*	FREE	£500	£2000+	£neg

\*dependent on company size

# Innovation Support

## For LTHT staff

- Innovation training
- Innovation events – inc. technology EXPO's
- Support for developing ideas
- IP advice, market assessment and protection
- Support for developing collaborations
- Connectivity to external partners
- Project management

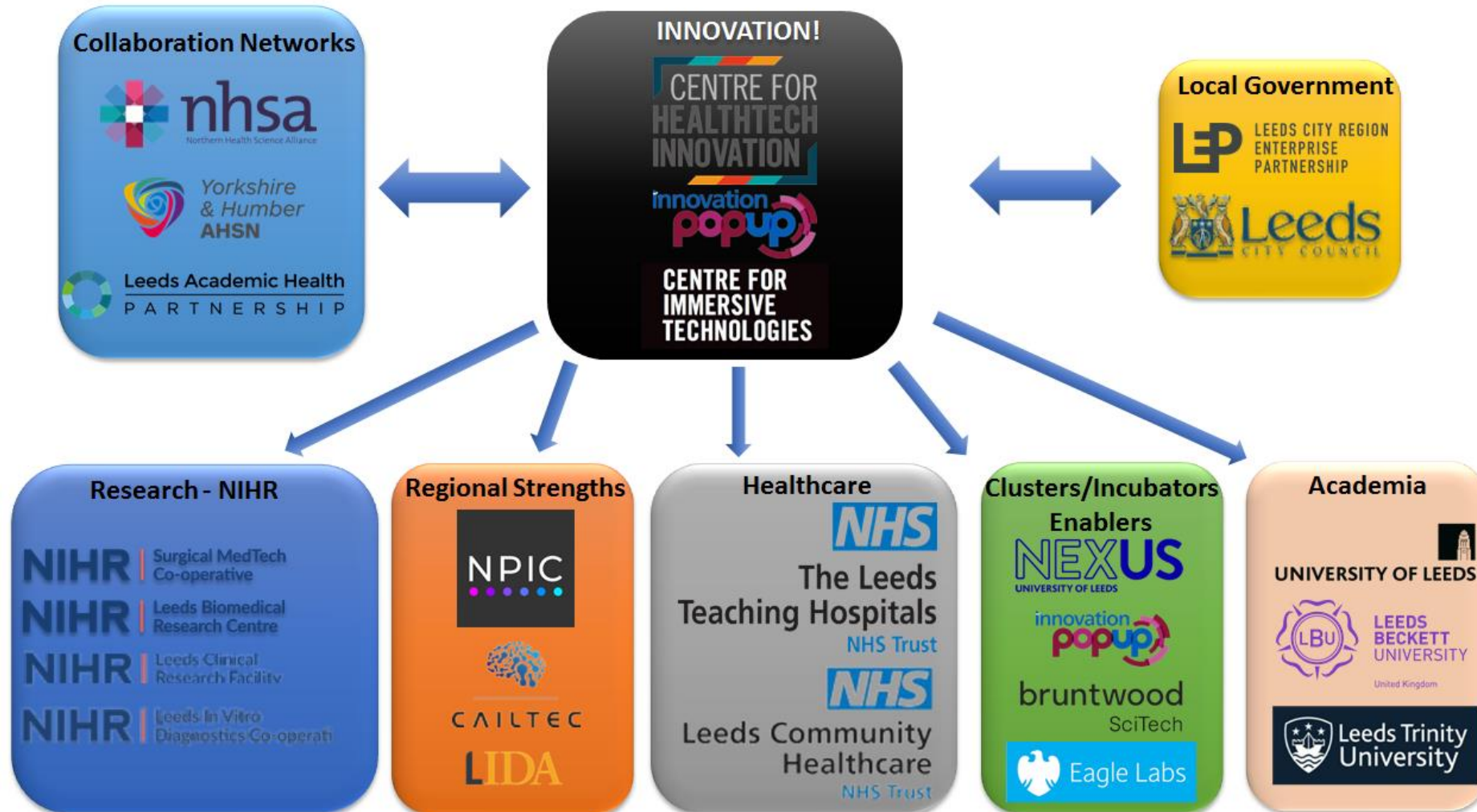
## For Businesses/third parties

- Connectivity with LTHT staff and infrastructure for projects – co-development, evaluation, adoption
- Understanding of unmet needs within large healthcare provider
- Training alongside NHS staff
- Support for carrying out RWE projects
- An understanding of the NHS landscape and the factors that influence adoption
- Connectivity to other regional infrastructure



# Wider LTHT research infrastructure

- NIHR Clinical Research Facility: Early-phase clinical trials
- Clinical research delivery teams
- Access to samples (blood, tissue) for biomarker discovery, diagnostic validation etc
- Access to custom datasets from routine clinical care for training / validating AI algorithm
- National Pathology Imaging Co-operative
- NIHR-funded infrastructure (BRC, MIC's) run in collaboration with the University of Leeds

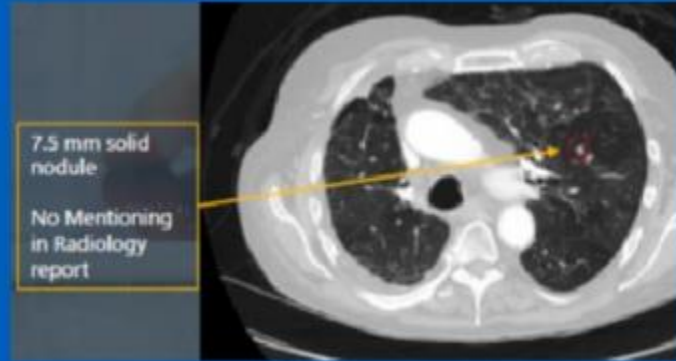


# Activity to date

- Initial team in place – 3.0 WTE
- >200 companies engaged
- >40 potential collaboration projects
- 10 partners in advanced stages of project development
- > 60 clinical staff directly engaged with projects
- International work including Israel, Norway, Spain, Switzerland, Canada, Taiwan and Japan
- Clinical entrepreneur programme developed

## A UNIQUE SOLUTION

Developed to assist radiology teams by uncovering actionable failure points throughout the radiology workflow.



## IMPROVING QUALITY IN RADIOLOGY

Led by Fahmid Chowdhury

**2021**

12 month pilot  
Clinical Service  
Evaluation



Review of Joint  
Research and  
development  
opportunities for  
new applications



**2022**

Business case  
following CSE and  
begin pop-up  
supported Research  
and Development

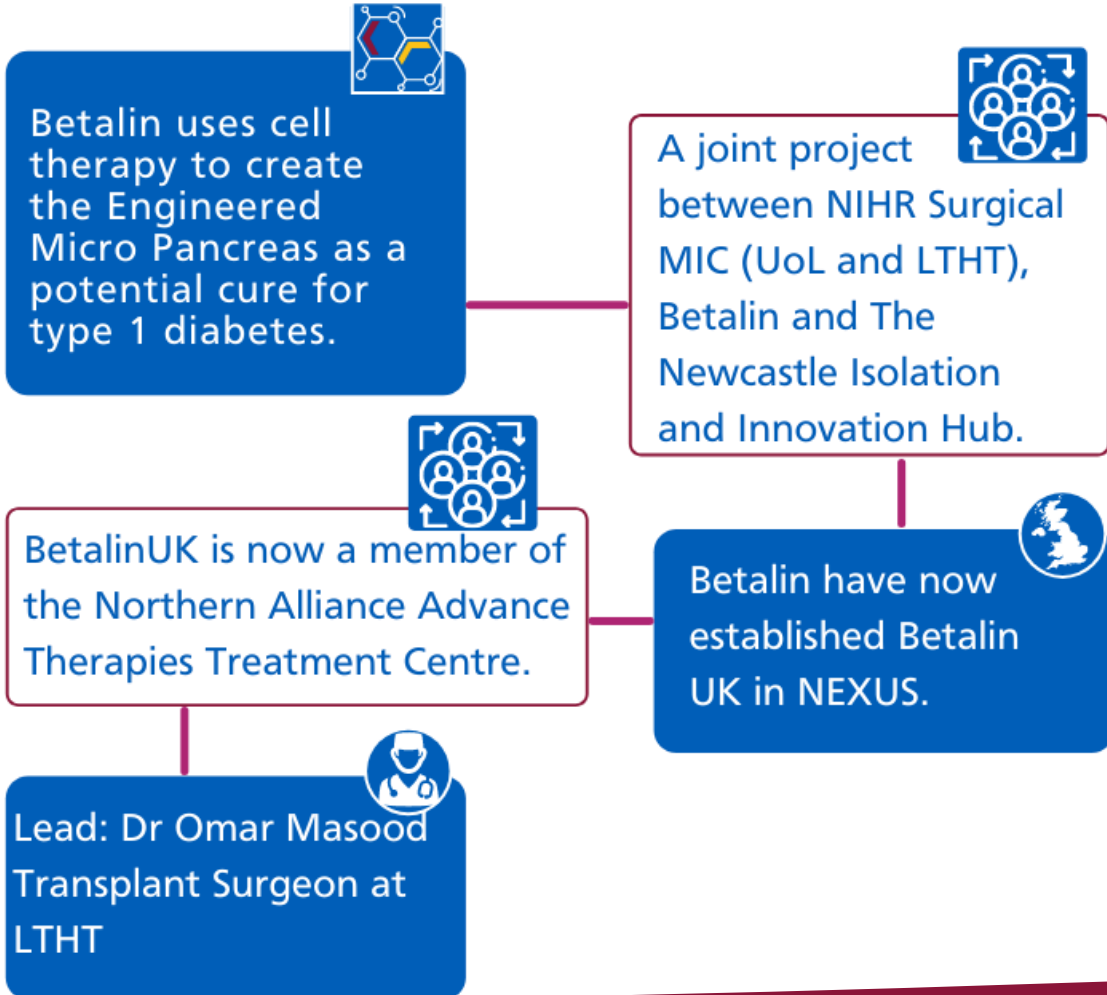


Joint research and development of new  
algorithm applications performing  
detection, segmentation and analysis  
using deep learning



Clinical study and research on currently  
developed applications for validating  
performance and clinical suitability

# BETALIN THERAPEUTICS



**2021**

Pre-clinical studies, robustness testing and regulation and ethics approvals.

**2022**

Planned first in person trial in Leeds partnered with the NIHR CRF.



[innovation.lth@nhs.net](mailto:innovation.lth@nhs.net)