

Telensa

making brighter cities

©signify

Nigel Harris

Global Account Manager

Telensa at a glance

Telensa



#1

in connected street lighting

2.0 million streetlights connected

100+ networks built

400 cities

15 years deployment experience

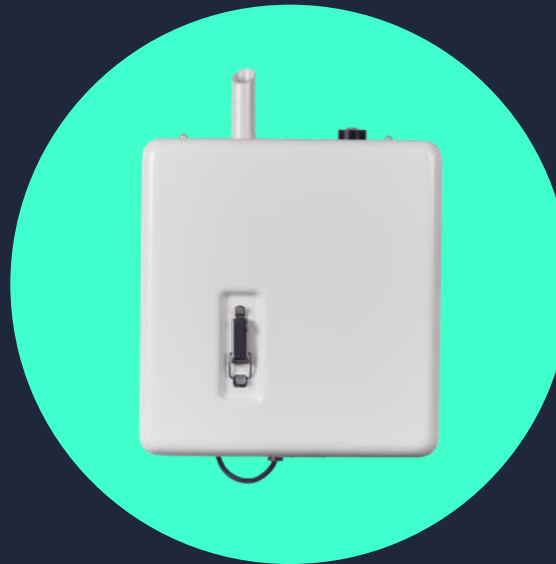


We design and manufacture the complete system

Telensa



...



...



Sensor/control
devices

Wide area
network

Management
application

Cleaner, smarter street lighting

Telensa

Smart lighting controls, along with LED lights, help reduce energy consumption, reduces carbon emissions, improves network management & reduces faults.



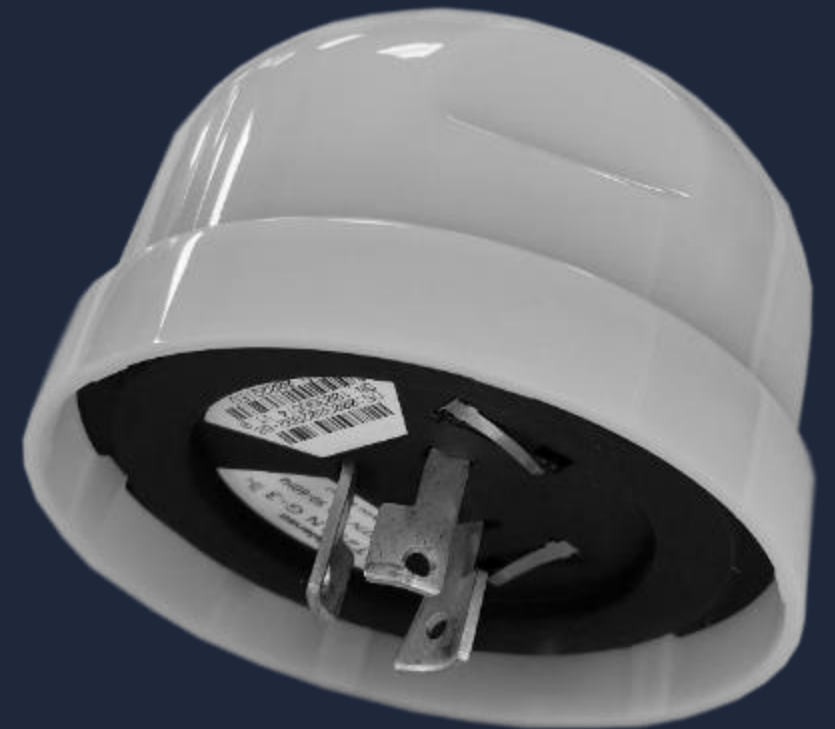
Adjustable output through programs or dynamic dimming



Smart detection and reporting of faults and unusual operation



Remote control and rich data collection



UNB network

Telensa



Telensa UNB

- Radio coverage overlaps for resilience
- Long range
- Unlicensed spectrum is readily available
- System is inexpensive & fast to deploy
- Expand the network at any time
- Up to 5,000 lights connect to a base station
- ETSI approved

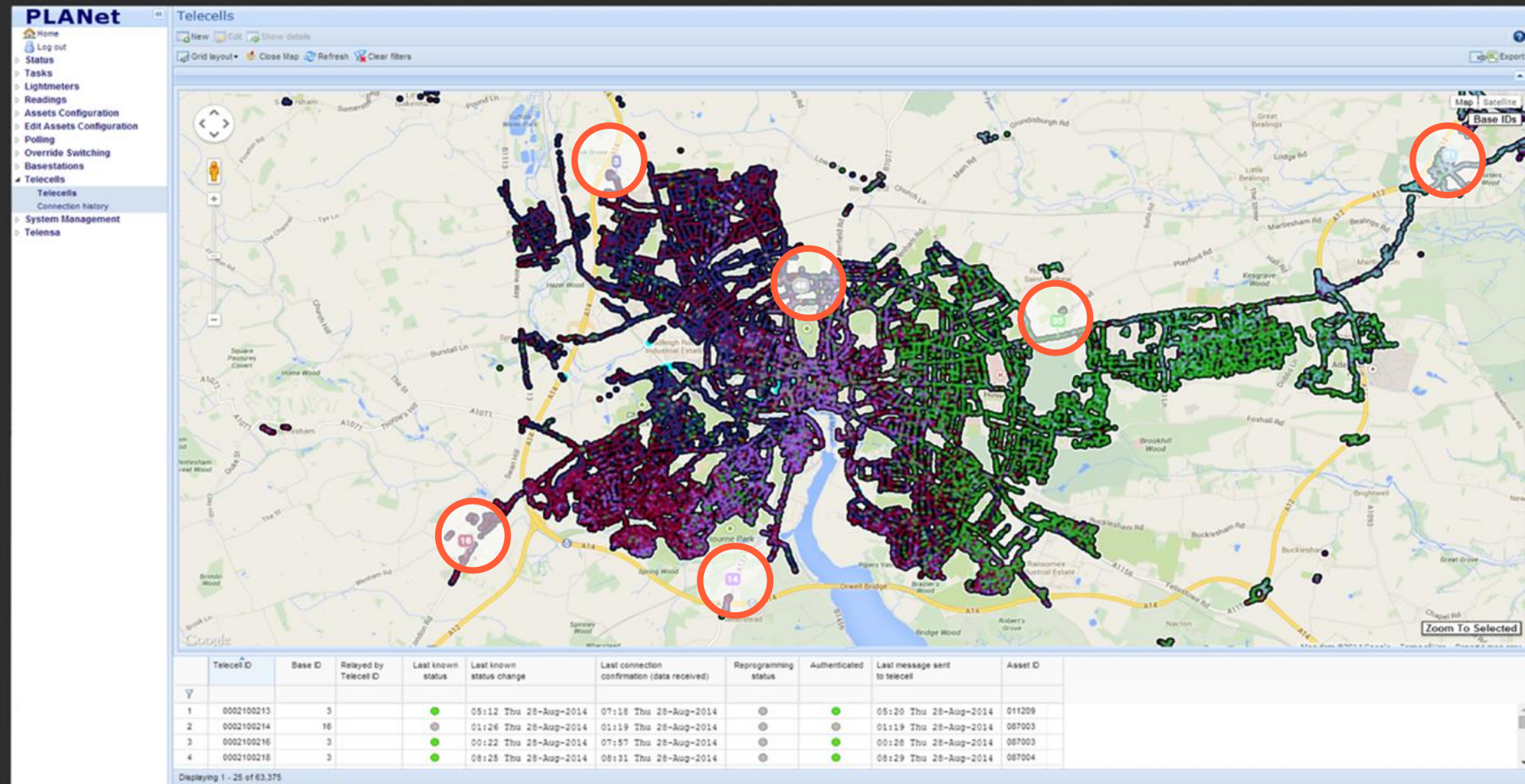
Wide area – high capacity

Telensa

Case study:

18,400 streetlights
6 base stations

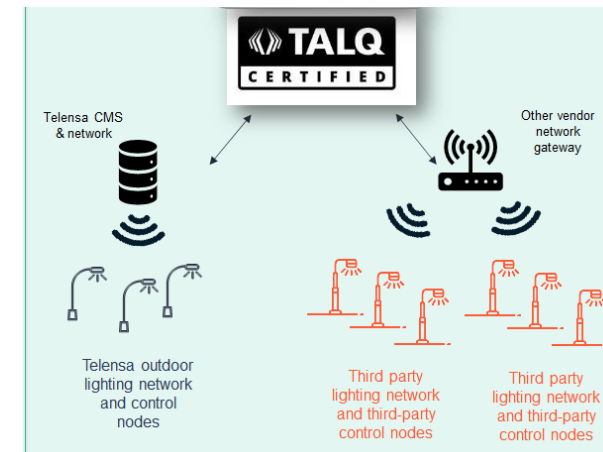
Base stations combined, connecting all 18,400 units



PLANet Central Management System (CMS)

Telensa

- **Sophisticated, adaptable programming** – allows alteration of lights based on time, special events, emergencies, other sensors, etc.
- **Complete control** – see 100 or 100,000 streetlights in a simple map-based or grid operation (large scale)
- **Detailed operational intelligence** – 24/7 fault reporting can reduce night patrols and provide fault diagnosis to improve first-time fix and better resource planning
- **Integration to other systems** – easy integration with asset and fault management systems using APIs and also metering and billing systems.
- **Flexible hosting options**



Lighting for every need

Telensa



- Turn streetlights into a fully adaptive & dynamic asset
- Street lighting no longer needs to be one fits all
- Group by location or function
- Residential, crime hotspots, key traffic routes, business districts all with their own lighting policy

Working on behalf of citizens

Telensa



Improve safety & reduce crime



Mitigate light pollution for citizens and wildlife in accordance with Dark Skies Association guidelines, and de-carbonisation initiatives

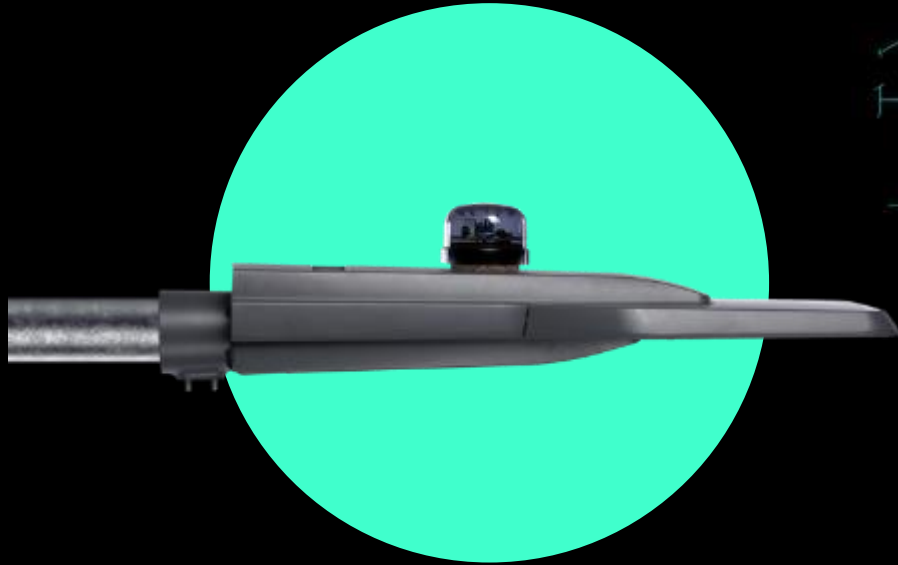


Proactive public service and fewer complaints

Both the *qualitative* and *quantitative* benefits of adaptive lighting should not be under-estimated in helping councils and municipalities to work collaboratively with their communities to develop, and enact, the vision for their local area

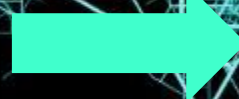
Future-proofing your smart city

Telensa



Streetlight infrastructure provides:

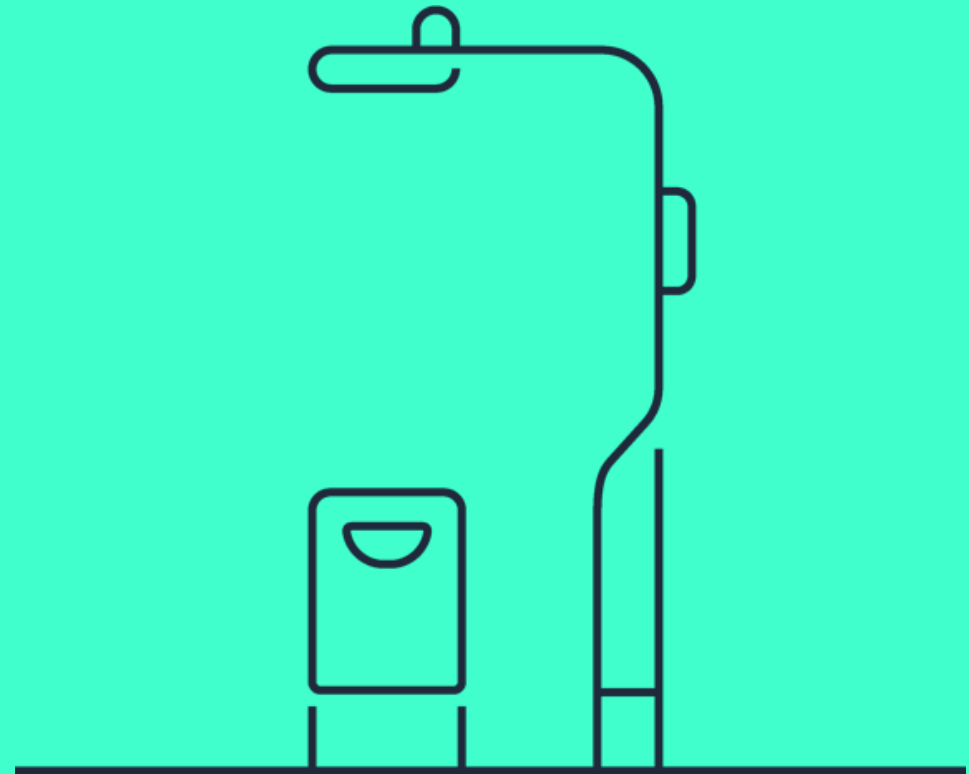
- Location provenance
- Power source
- Fixed data point
- And is out of reach



Lowers the barriers to deploying subsequent smart city sensors

Smart street lighting - Summary

- Central control saves energy
- Improves service levels
- Lighting responds to citizen needs
- Enables you to adapt to future standards
- Achieves good lighting practice
- Responds to political targets & strategies
- Lowers the smart city entry barriers



Telensa

©signify

Nigel Harris

Global Account Manager

m: +44 (0)7706 013002 e : nigel.harris@telensa.com w : www.telensa.com