



UBER LUXE SAFARIS

*The Ultimate Bespoke Safari Experience*

# Rwanda Presentation





## About us

We are a boutique Luxury Safari Company based in Kigali. We are licensed and registered by the Rwanda Development Board, are members of the Rwanda Tourism & Travel Association, Travel Made member, SITE Africa Chapter, and Pure.

Uber Luxe Safaris is the fastest growing luxury safaris company in Rwanda. Since its formation 7 years ago, they have proven their great expertise and specialism in providing the ultimate, authentic safaris experiences in Rwanda and the wider East Africa region. We go above and beyond in ensuring our travellers experience the highest level of bespoke luxury travel service.

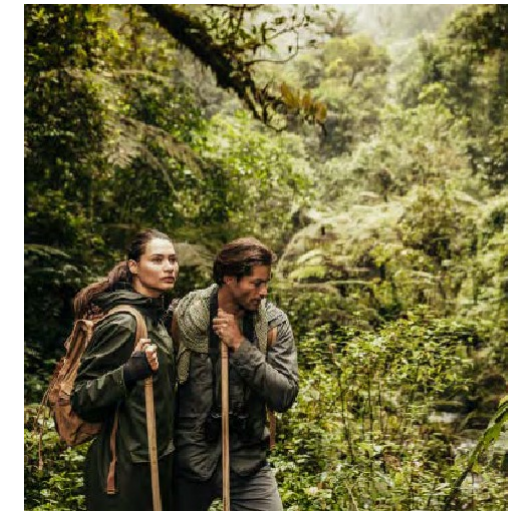
Uber Luxe Safaris is committed to community conservation in Rwanda, education and leadership youth programmes, anti-poaching initiatives, supporting regional foundations, and wildlife funds.



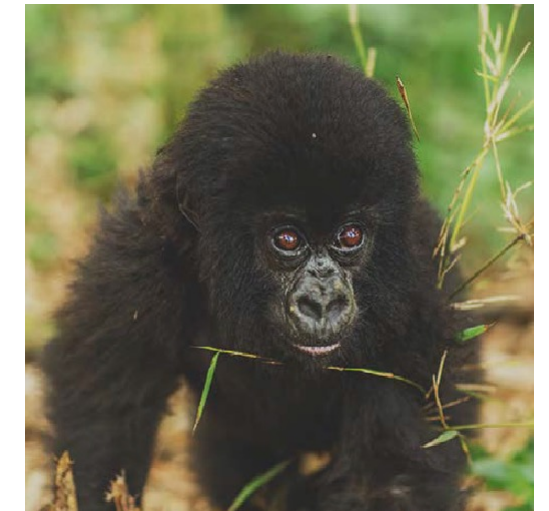


# Uber Luxe Safaris Services & Experiences

Helicopter  
&  
Fly-In  
Safaris



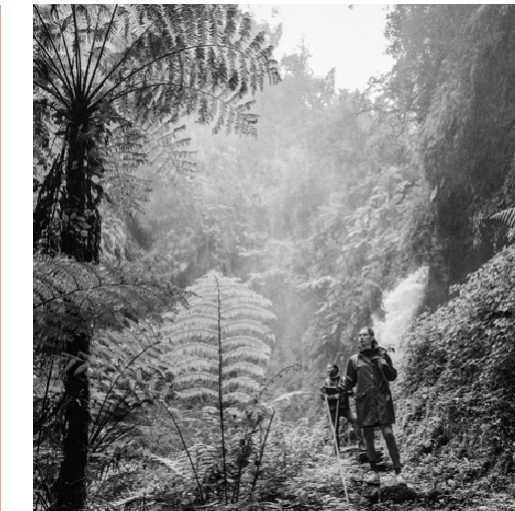
Primate  
&  
Savanna  
Safaris



Luxury  
&  
Exclusive  
Safaris

Group  
&  
Family  
Safaris

Walking  
&  
Trekking  
Safaris



Eco  
&  
Community  
Safaris



Hotels  
& Safari  
Lodge  
Reservations



Securing all  
Tourists  
Permits

VIP Meet &  
Greet  
Services as  
standard for  
all Itineraries



# Helicopter & Ground Transfers

Uber Luxe Safaris takes pride in its partnership with Akagera Aviation. In providing Rwanda's helicopter services, Akagera Aviation provides both chartered and scheduled helicopter transfers between Kigali and Rwanda's main national parks – Volcanoes, Nyungwe and Akagera. They also service Gisenyi, Kibuya, Nyagatere and Kamembe airport.



## VEHICLE TYPES

Uber Luxe Safaris shall provide with late model (4 years maximum) deluxe touring Toyota Land Cruiser/V8/TXL or luggage van equipped as requested. Acceptable vehicle models will meet requirements of being fully equipped with Mineral water, Guide books and maps, sanitizer, First Aid box kit, working air conditioning and full time Wi-Fi.



## HELICOPTER TYPES

- Agusta 109/119-6 seater, 380 kilos
- VIP Agusta 139-5 seater, 550 kilos

Guests will be advised on the ideal choice of Helicopter from one point connecting to another point. Transparent pricing and offering a golden standard service will be at the forefront of this partnership.



# Purchase of All National Park Permits



Our commitment will be to secure all permits ahead of time, via the IREMBO online portal. To secure these permits we will require the date of trekking, a copy of the passport bio data page for each guest trekking and the activity the guests would like to partake in. Guests can guarantee participation in any given activity with the permit successfully obtained and it will be our core duty to ensure that all guests have their relevant activity permits.

Gorilla Permit	\$1,500
Golden Monkey Permit	\$100
Chimp Permit	\$90
Canopy walk permit	\$60



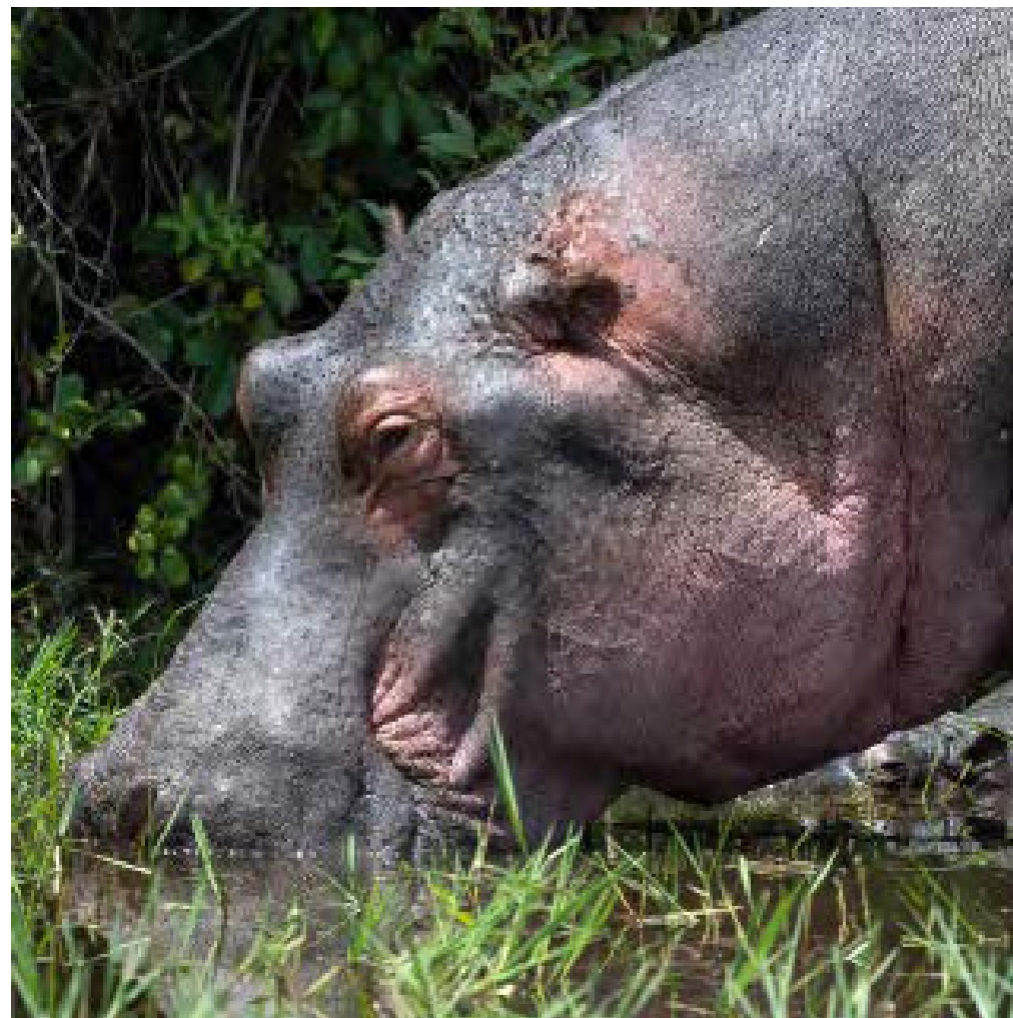
# The Land of A Thousand Hills



## Rwanda

Known as '*The Land of a Thousand Hills*', Rwanda's stunning scenery and warm, friendly people offer unique experiences in one of the most remarkable countries in the world. It is blessed with extraordinary biodiversity, with incredible wildlife living throughout its volcanoes, montane rainforest and sweeping plains.

Travellers come from far and wide to catch a glimpse of the magnificent gorillas, yet there is so much more to see and experience.





# Activities In Rwanda



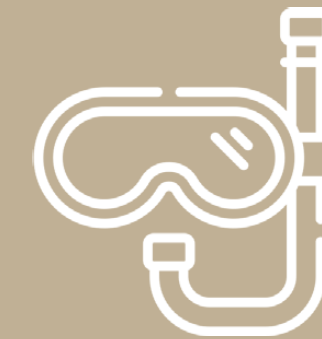
Musanze Caves



Biking



Birding



Water Sports



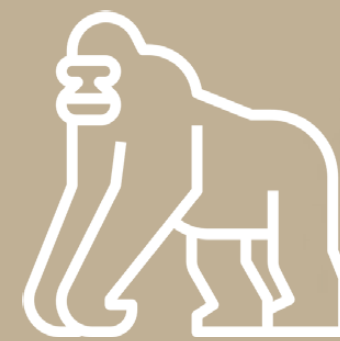
Hiking



Golden Monkeys



Primate Trekking



Gorilla Trekking



Boat Cruise



Helicopter Rides



Canopy Walks



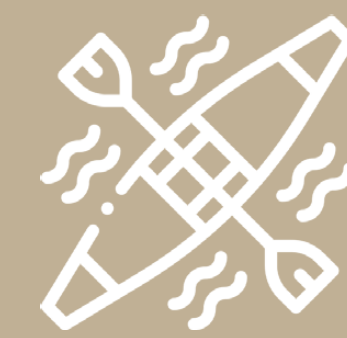
Game Safaris



Cultural  
Experience



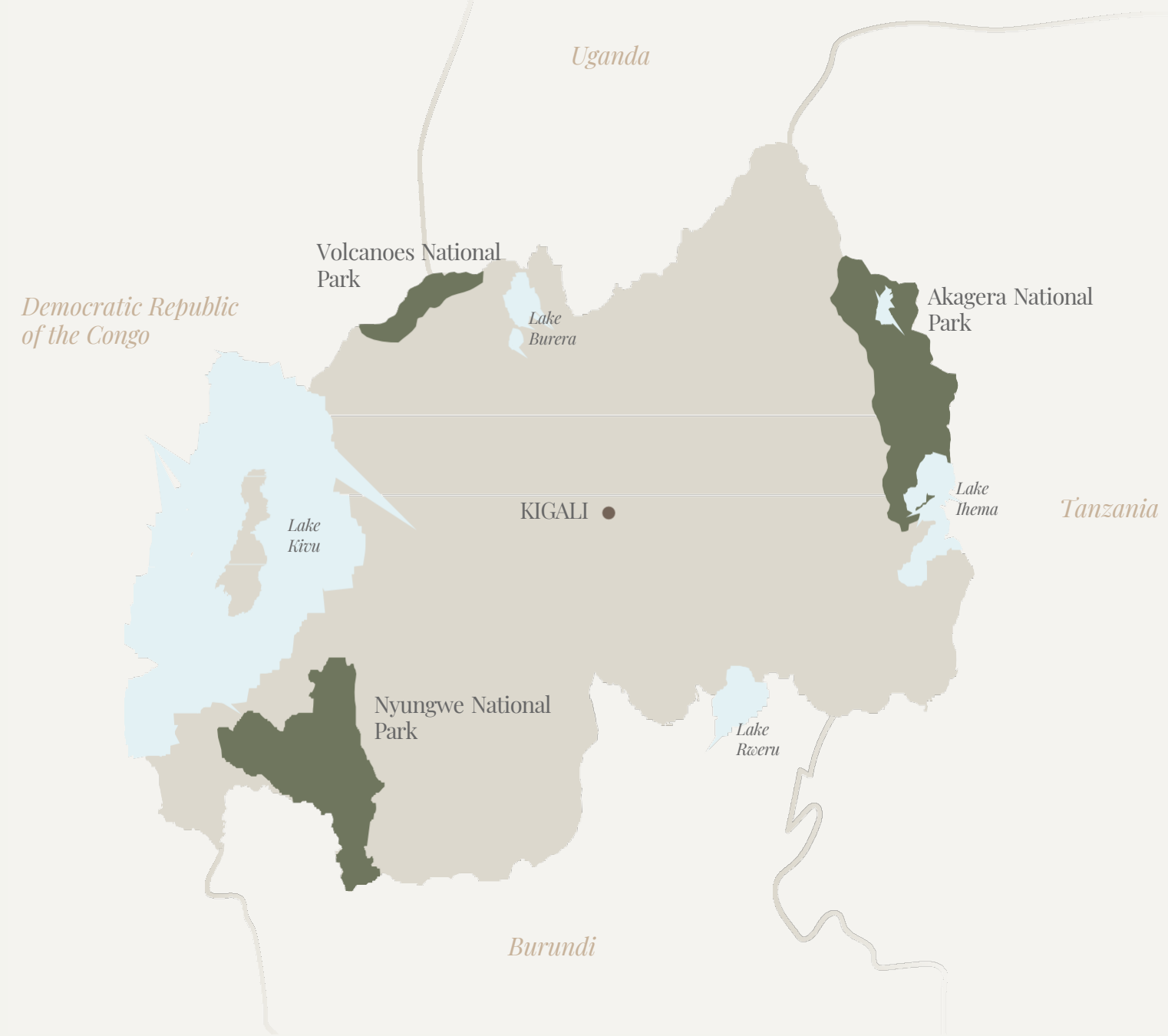
Tea Plantation



Kayaking



# Map of Rwanda



## Volcanoes National Park

Situated in the far north-west of Rwanda, Volcanoes National Park protects the steep slopes of this magnificent mountain range – home of the endangered mountain gorilla and a rich mosaic of montane ecosystems, which embrace evergreen and bamboo forest, open grassland, swamp and heath. Volcanoes National Park is named after the chain of dormant volcanoes making up the Virunga Massif: Karisimbi – the highest at 4,507m, Bisoke with its verdant crater lake, Sabinyo, Gahinga and Muhabura.

## Nyungwe National Park

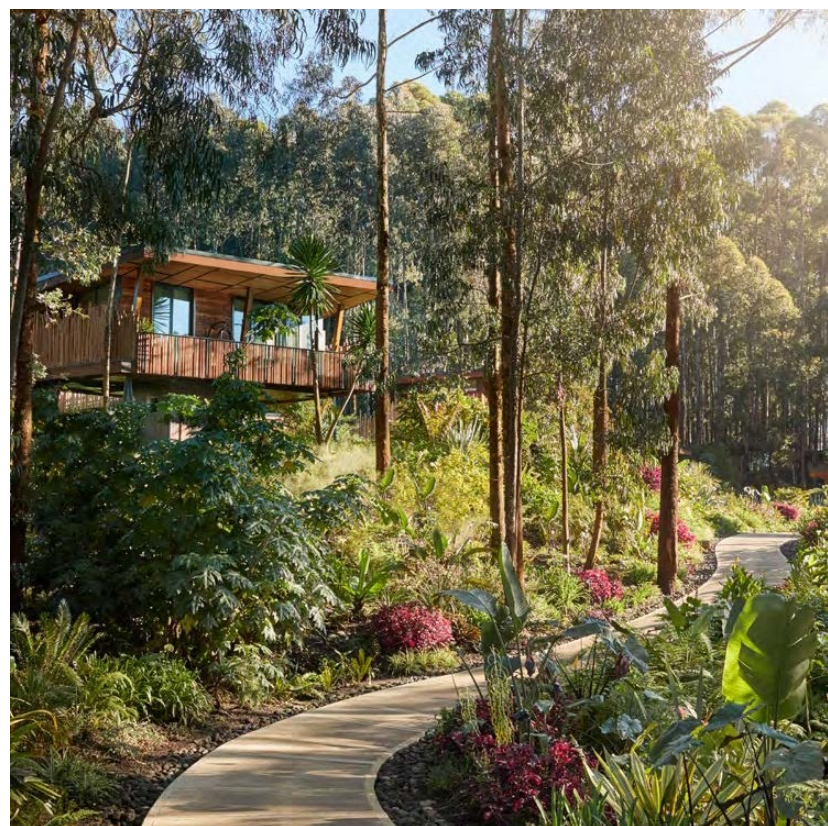
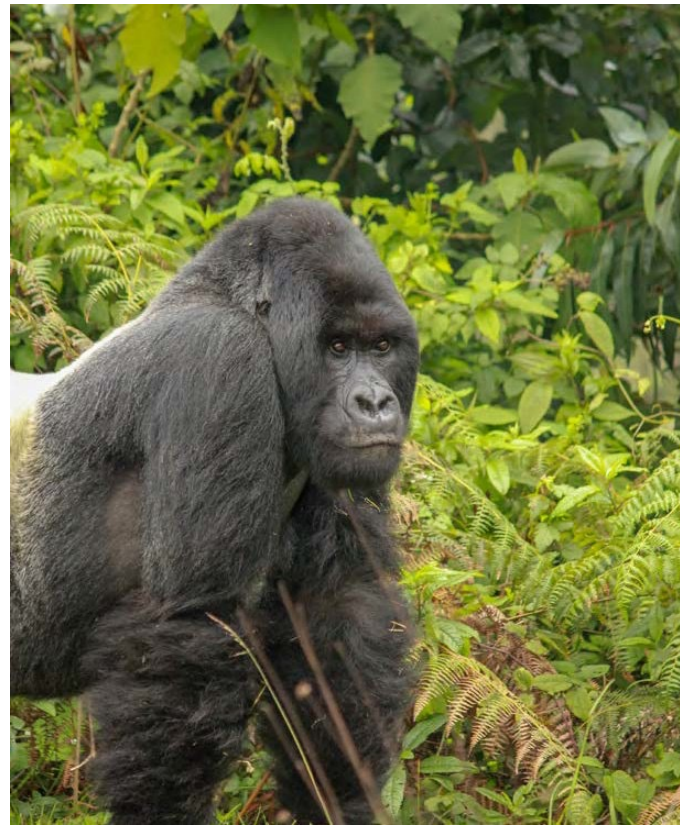
One of the oldest rainforests in Africa, Nyungwe is rich in biodiversity and spectacularly beautiful. The mountainous region is teeming with wildlife, including a small population of chimpanzees as well as 12 other species of primate, including the L’Hoest’s monkey endemic to the Albertine Rift. With 15 trails along with various other activities, visitors can choose to sample the delights of the forest or indulge themselves for a week or more in one of Africa’s most stunning forests.

## Akagera National Park

The relatively warm and low-lying plains of Akagera comprise savannah, woodland, wetland and a dozen lakes. In partnership with African Parks, Akagera National Park transformed into a world class location to experience a safari. Visitors can encounter rhino, lion, leopard, elephant, buffalo, giraffe, hippo, zebra, baboons, vervet monkeys, an incredible 490 bird species, plus much more.



# Volcanoes National Park



Distance from Kigali	Drive	Helicopter
116 km	2 hrs-30 min	28 min

## Key Highlights

- A half-day Canoeing adventure in lush countryside, on a gentle river near to Musanze
- Gorilla Trekking
- Golden Monkey Trekking
- Musanze Caves
- Visit the Dianne Fossey Tomb
- Cycling to the Twin Lakes ( 1 Day Tour)
- Bisoke Hike: (1 Day Tour)
- Karisoke Research Center Visit
- Cultural Experiences
  - Gorilla Guardians Village
  - Beyond the Gorillas Experience Village visit
  - Local School visit
  - Local Market Visit-free

## Where To Stay?

HOTEL NAME	RANGE	DISTANCE TO PARK HEADQUARTERS
One&Only Gorillas Nest	Luxury	15 min
Singita Kwitonda & Kataza House	Luxury	20 min
Bisate Lodge	Luxury	40 min
Sabyinyo Silverback Lodge	Luxury	40 min
Virunga Volcanoes Lodge	Luxury	1 hr
Bishops House	Mid Luxury	20 min
Amakoro Songa Lodge	Mid Luxury	30 min
Five Volcanoes Boutique Hotel	Midrange	20 min
Tiloreza Volcanoes Eco Lodge	Midrange	20 min



# Nyungwe National Park



Distance from Kigali	Drive	Helicopter
246 km	6 hrs-30 min	40 min

## Key Highlights

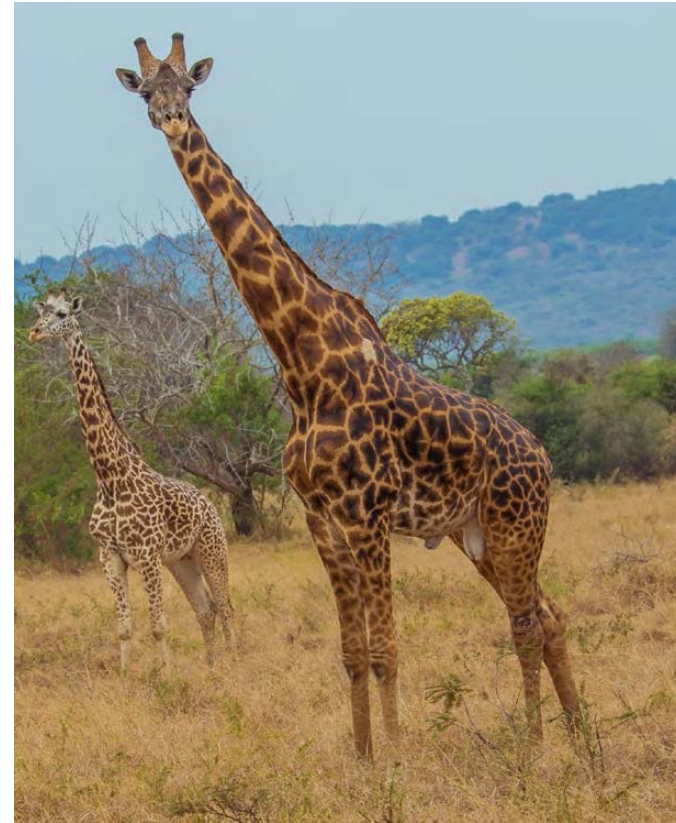
- Chimpanzee Trekking
- Canopy Walk
- Waterfall Hike
- Colobus Monkey Trekking
- Nature Hiking
- Tea Plantations

## Where To Stay?

HOTEL NAME	RANGE	DISTANCE TO PARK HEADQUARTERS
One&Only Nyungwe House	Luxury	35 min



# Akagera National Park



Distance from Kigali	Drive	Helicopter
135 km	2 hrs-30 min	30 min

## Key Highlights

- Savanna & Wetland Safaris, including the Big 5
- Night game drives
- Boat safaris
- Behind the scenes National Park Management tour
- Birding
- Fishing



## Where To Stay?

HOTEL NAME	RANGE
Magashi Camp	Luxury
Ruzizi Tented Lodge	Mid Luxury
Akagera Game Lodge	Midrange



# Kigali City & Surrounds



## Key Highlights

- Kigali Genocide Memorial Centre
- Campaign against Genocide Museum
- Inema Art Gallery
- The Presidential Museum
- Question Coffee Master Class
- Thousand Hills Distillery
- Nyamirambo Women's Centre / Guided village walking tour
- Hiking the Congo Nile Trail
- Biking the Congo Nile Trail
- Boat Cruise
- Kayaking
- Helicopter Tours
- Azizi Life Rural Experience

## Where To Stay?

HOTEL NAME	RANGE	LOCATION
Retreat by Heaven	Luxury	Kigali
Kigali Serena Hotel	Luxury	Kigali
Kigali Marriott Hotel	Luxury	Kigali
Radisson Blu	Luxury	Kigali
Onomo Hotel	Midrange	Kigali
Select Boutique Hotel	Midrange	Kigali
Lake Kivu Serena Hotel	Mid Luxury	Gisenyi
Inzozu Beach Hotel	Midrange	Gisenyi





## TRAVEL INFORMATION

High Season	1st June to 31st October
Low Season	1st November to 31st May

### WEATHER/CLIMATE

Rwanda experiences rain showers throughout the year, with the rainy season being October – December and to a lesser extent January – April. Average daily temperatures in Rwanda are about 75 degrees Fahrenheit while night-time temperatures can drop in to the low 50s.

### VISA REQUIREMENTS

Visa is purchased on arrival and is a quick and seamless process priced at 50USD per person.

### CURRENCY & CREDIT CARDS

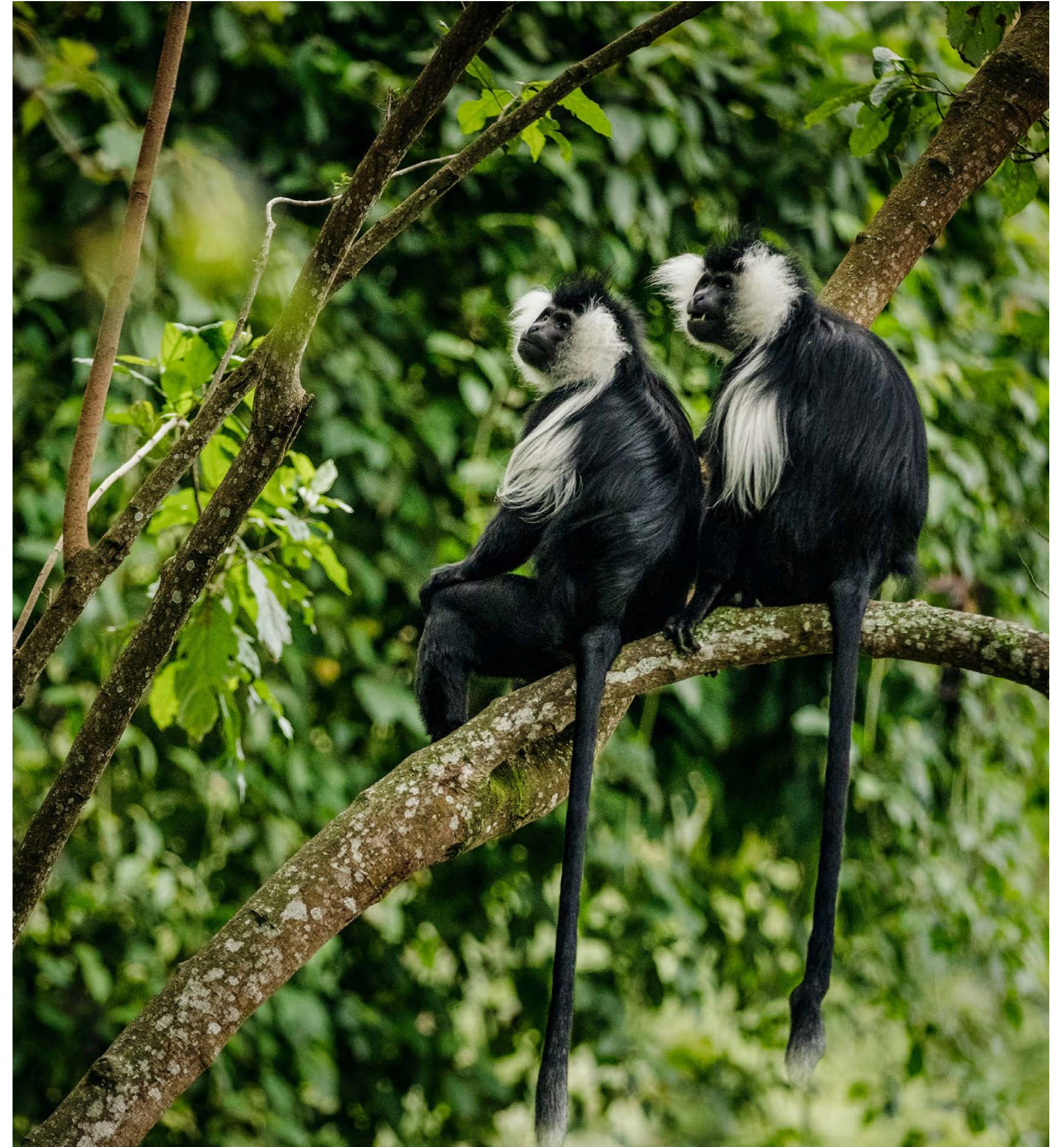
The currency used in Rwanda is the Rwanda Franc (RWF). Credit cards are accepted in almost all hotels, bars and restaurants. A few out of the way places may not accept credit cards. In most places cash is accepted. ATM's are available in larger towns and cities.

### VACCINATIONS

It is not mandatory to have the yellow fever vaccination. However, we recommend you should have it.

### WATER IN RWANDA

Although tap water may be fine in most areas for bathing and brushing teeth, we recommend that you drink bottled water at all times.







[www.uberluxesafaris.com](http://www.uberluxesafaris.com)

[info@uberluxesafaris.com](mailto:info@uberluxesafaris.com)

+250 786 559 109

FB TW IG

@uberluxesafaris



Traveller  
Made®



PURE  
LIFE EXPERIENCES



site

